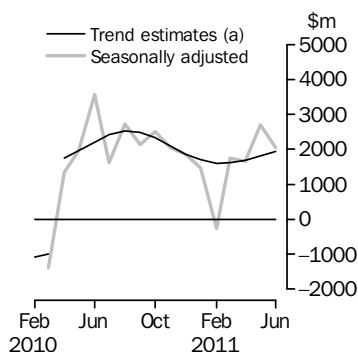


INTERNATIONAL TRADE IN GOODS AND SERVICES

AUSTRALIA

EMBARGO: 11.30AM (CANBERRA TIME) WED 3 AUG 2011

Balance on Goods and Services



(a) A trend break of \$2,500m has been applied to April 2010.

KEY FIGURES

	Apr 2011	May 2011	Jun 2011	May 11 to Jun 11 %
	\$m	\$m	\$m	change
BALANCE ON GOODS AND SERVICES				
Trend estimates	1 689	1 812	1 940	..
Seasonally adjusted	1 667	2 699	2 052	..
CREDITS (Exports of goods & services)				
Trend estimates	25 449	25 881	26 274	2
Seasonally adjusted	25 525	26 441	26 405	—
DEBITS (Imports of goods & services)				
Trend estimates	23 759	24 070	24 334	1
Seasonally adjusted	23 858	23 742	24 353	3

.. not applicable

— nil or rounded to zero (including null cells)

KEY POINTS

BALANCE ON GOODS AND SERVICES

- The trend estimate of the *balance on goods and services* was a surplus of \$1,940m in June 2011, a rise of \$128m on the surplus in May 2011.
- In seasonally adjusted terms, the *balance on goods and services* was a surplus of \$2,052m in June 2011, a fall of \$647m on the surplus in May 2011.

CREDITS (EXPORTS OF GOODS & SERVICES)

- In seasonally adjusted terms, *goods and services credits* fell \$36m to \$26,405m. *Non-monetary gold* fell \$894m (55%) and *net exports of goods under merchanting* fell \$2m (6%). *Non-rural goods* rose \$770m (4%) and *rural goods* rose \$86m (3%). *Services credits* rose \$5m.

DEBITS (IMPORTS OF GOODS & SERVICES)

- In seasonally adjusted terms, *goods and services debits* rose \$611m (3%) to \$24,353m. *Intermediate and other merchandise goods* rose \$320m (4%), *capital goods* rose \$296m (7%) and *non-monetary gold* rose \$22m (6%). *Consumption goods* fell \$34m (1%). *Services debits* rose \$8m.

2010–11 SITUATION

- In original terms, the *balance on goods and services* for 2010–11 was a surplus of \$22.4b, a turnaround of \$25.9b on the deficit of \$3.5b recorded in 2009–10, resulting from a \$44.0b (17%) increase in *goods and services credits* offset by a \$18.2b (7%) increase in *goods and services debits*.

INQUIRIES

For further information contact Selvi Sekhar on Canberra (02) 6252 5540 for Goods, and Lee Taylor on Canberra (02) 6252 6377 for Services.

NOTES

FORTHCOMING ISSUES

ISSUE	RELEASE DATE
July 2011	12 September 2011
August 2011	4 October 2011
September 2011	8 November 2011
October 2011	12 December 2011
November 2011	10 January 2012
December 2011	2 February 2012

.....

REVISIONS

Revisions have been made to incorporate the latest data relating to international merchandise trade and international trade in services. The international trade in goods and services on a balance of payments basis series have been revised from July 2010 onwards.

Table 17 summarises revisions to goods and services on a balance of payments basis, in original current price terms, since the last issue of this publication. In original terms, the revisions have increased the surplus on goods and services for the 11 months to May 2011 by \$440m.

Seasonally adjusted and trend series have been revised due to the incorporation of the revisions and estimates for the latest month.

IRON ORE AND COAL VALUES

Adjustments have been made to the value of the 'metal ores and minerals' and 'coal, coke and briquettes' components in the balance of payments series. See page 4 – *Commodity value adjustment* for details.

CHANGES IN FORTHCOMING ISSUES

The forthcoming July 2011 issue of *International Trade in Goods and Services* (cat. no. 5368.0) has been re-scheduled from the previously notified date of Thursday, 8 September 2011 to Monday, 12 September 2011.

Tables 12 and 13 of this publication present the major commodities for international merchandise trade exports and imports, respectively. The major commodities will be reviewed and updated as appropriate in the July issue of this publication.

RELATED RELEASES

The publication *Australian Harmonized Export Commodity Classification (AHECC) – Electronic Publication, Jan 2012* (cat. no. 1233.0) will be released on the ABS website on 22 August 2011. See page 6 – *Related releases* for details.

IMPACT OF NATURAL DISASTERS

The collection and processing of data included in this publication were not disrupted by the Japanese earthquake and tsunami. See page 7 – *Impact of natural disasters* for details.

Brian Pink
Australian Statistician

CONTENTS

	<i>page</i>
Commodity value adjustment	4
Related releases	6
Impact of natural disasters	7
Time series data	8

ANALYSIS

Analysis and comments	10
---------------------------------	----

TABLES

INTERNATIONAL TRADE IN GOODS AND SERVICES – BALANCE OF PAYMENTS BASIS

1 Goods and services, summary, seasonally adjusted and trend estimates	14
2 Goods and services, summary, original	15
3 Goods credits, original	16
4 Goods debits, original	17
5 Goods credits, seasonally adjusted	18
6 Goods debits, seasonally adjusted	19
7 Goods credits, trend estimates	20
8 Goods debits, trend estimates	21
9 Services, summary, original	22
10 Services, summary, seasonally adjusted and trend estimates	23
11 Services, original, quarterly	24

INTERNATIONAL MERCHANDISE TRADE – RECORDED TRADE BASIS

12 International merchandise exports, by commodity	25
13 International merchandise imports, by commodity	28
14 International merchandise trade, by country and country groups	31
15 International merchandise trade, by state	32

OTHER TABLES

16 Period average exchange rates per Australian dollar	33
17 Summary of revisions, goods and services, original	34

OTHER INFORMATION

Explanatory notes	35
Appendix – Related articles	41

COMMODITY VALUE ADJUSTMENT

VALUE ADJUSTMENT

International merchandise trade exports data (on a recorded trade basis) presented in tables 12–15 of this publication are based on information provided by exporters to the *Australian Customs and Border Protection Service* (Customs and Border Protection). At the time of initial reporting to Customs and Border Protection estimated quantity and unit price information may be reported for commodities like iron ore and coal. Final quantity and unit price information are updated progressively in recorded trade data as exporters revise the information provided to Customs and Border Protection. When additional information on quantity and unit price for these commodities are available, the ABS may adjust the balance of payments series to minimise the impact of future revisions.

The balance of payments series in this issue include:

- a positive \$300m adjustment to the value of the 'metal ores and minerals' component for June 2011. The adjustment of \$380m made in the previous issue to May 2011 has been removed
- a positive \$280m adjustment to the value of the 'coal, coke and briquettes' component for June 2011. The positive adjustment of \$230m applied to May 2011 remains and the adjustment of \$130m applied to April 2011 has been removed.

The balance of payments component 'metal ores and minerals' includes two SITC divisions:

- SITC 27 crude fertilizers (excl. those of Division 56) and crude minerals (excl. coal, petroleum and precious stones)
- SITC 28 metalliferous ores and metal scrap.

On a balance of payments basis, the 'metal ores and minerals' component (incorporating the adjustment described above) rose \$460m (6%) in June 2011 in original terms and rose \$317m (4%) in seasonally adjusted terms. The main commodities, in original terms on a recorded trade basis, contributing to the June 2011 outcome were:

- iron ore and concentrates (SITC 281), including the balance of payments adjustment, fell \$143m (3%) in June 2011
- copper ores and concentrates, copper mattes and cement copper (SITC 283), rose \$203m (60%), with volumes up 14% and prices up 41%
- ores and concentrates of base metals (excl. of iron, copper, nickel, aluminium, uranium and thorium) n.e.s. (SITC 287), rose \$193m (67%), with volumes up 7% and prices up 56%.

COMMODITY VALUE ADJUSTMENT *continued*

SELECTED COMMODITIES

SELECTED COMMODITIES, Unit price and volume analysis: **Recorded Trade Basis**

		CHANGE IN					
		Jan	Feb	Mar	Apr	May	Jun
		2011	2011	2011	2011	2011	2011
		%	%	%	%	%	%
IRON ORE							
Lump							
Volumes		-15	-22	49	-11	8	np
Price		7	3	1	1	4	np
Fines							
Volumes		-16	-16	35	-6	8	np
Price		7	4	2	1	3	np
COAL							
Hard coking							
Volumes		-39	-5	35	-1	8	—
Price		1	5	4	8	np	np
Semi-soft							
Volumes		-33	3	36	-14	-11	34
Price		-2	9	6	11	np	np
Bituminous (Thermal)							
Volumes		-10	-20	3	22	-3	20
Price		5	3	1	-5	np	np

— nil or rounded to zero (including null cells)

np not available for publication but included in totals where applicable, unless otherwise indicated

On a recorded trade basis (prior to the balance of payments adjustment), between May and June 2011, large value movements were recorded for the following selected commodities:

- bituminous (thermal) coal rose \$283m (25%) with exports to China up \$182m, driven by volumes, and Japan up \$158m (33%) with volumes up 28%
- semi-soft coking coal rose \$189m (28%) with exports to China up \$88m, driven by volumes, and Republic of Korea up \$74m (73%) with volumes up 61%.

RELATED RELEASES

AUSTRALIAN HARMONIZED EXPORT COMMODITY CLASSIFICATION (AHECC)

The publication *Australian Harmonized Export Commodity Classification (AHECC) - Electronic Publication, Jan 2012* (cat. no. 1233.0) will be released on the ABS website on 22 August 2011. This publication presents the Australian Harmonized Export Commodity Classification (AHECC) statistical structure for use from 1 January 2012. Changes to the AHECC result from the introduction of the five yearly review conducted by the World Customs Organisation and the ABS review of statistical codes. Some changes have been incorporated to the proposed changes presented in the *Information Paper: Proposed Changes to Statistical Codes in the AHECC, 2012* (cat. no. 5368.0.55.015), as a result of the consultation process with users. This publication includes the concordance from AHECC 2007 to AHECC 2012. However, the correspondence to related classifications and free standing descriptors used for dissemination of data, will not be available until 8 December 2011. These will be provided in an *Information Paper: Changes to AHECC and Customs Tariff* (cat. no. 5368.0.55.017).

IMPACT OF NATURAL DISASTERS

JAPANESE EARTHQUAKE AND TSUNAMI

The Japanese earthquake and tsunami occurred on 11 March 2011. On a month to month basis, original and seasonally adjusted series can be impacted by a number of factors including commodity prices, exchange rates, supply constraints, consumer confidence and unusual influences. It is not usually possible to quantify the impact of a specific event, like the Japanese earthquake and tsunami, on the export and import series. The impact of these events will be closely monitored by the ABS.

Between May and June 2011 merchandise imports from Japan rose \$425m (39%) after rising \$313m (40%) between April and May 2011. The major components contributing to the rise in June 2011 were:

- non-industrial transport equipment, up \$246m (80%), after rising \$190m between April and May 2011
- fuels and lubricants, up \$71m (47%), after rising \$150m between April and May 2011.

Between May and June 2011 merchandise exports to Japan rose \$348m (9%). The major components contributing to the rise were:

- other non-rural, up \$128m (15%)
- metal ores and minerals, up \$118m (12%)
- coal, coke and briquettes, up \$111m (9%).

TIME SERIES DATA

TIME SERIES DATA

Tables 1 to 16 of this publication are available free on the ABS website:

<http://www.abs.gov.au> from the 'Downloads' tab of this issue with longer time series. A number of these tables present more detailed breakdowns than included in the publication. A number of additional tables are available free on the ABS website.

Tables with more detailed breakdowns:

11a Services credits: Original - Quarter¹

11b Services debits: Original - Quarter¹

12b Merchandise exports by Standard International Trade Classification (3 digit), FOB Value

13b Merchandise imports by Standard International Trade Classification (3 digit), Customs Value

14a Merchandise exports, Country and Country Groups, FOB Value

14b Merchandise imports, Country and Country Groups, Customs Value

Additional tables:

31 Merchandise exports by Broad Economic Category (BEC)

32a Merchandise exports, Industry (ANZSIC 2006), FOB Value

32b Merchandise exports, Industry (ANZSIC 1993), FOB Value

33 Merchandise imports by Broad Economic Category (BEC)

34 Merchandise imports by Balance of Payments Broad Economic Category (BoPBEC)

35a Merchandise imports, Industry (ANZSIC 2006), Customs Value

35b Merchandise imports, Industry (ANZSIC 1993), Customs Value

36 Merchandise exports, state by country and country groups

37 Merchandise imports, state by country and country groups

91 Monthly seasonal adjustment factors and forward factors for 12 months.

¹ With a one quarter lag for the more detailed breakdowns.

TIME SERIES DATA *continued*

TRADE IN SERVICES DATA CUBES

Trade in services data cubes are usually updated on an annual basis. Calendar year (cat. no. 5368.0.55.004) statistics are updated following the March issue of this publication and financial year (cat. no. 5368.0.55.003) statistics are updated following the September issue of this publication.

The following tables were included in the calendar and financial year data cubes:

- 1 International trade in services, credits, state by year
- 2 International trade in services, credits, year by state
- 3 International trade in services, debits, state by year
- 4 International trade in services, debits, year by state
- 5 International trade in services, credits, year by country and service
- 6 International trade in services, credits, service by year and by country
- 7 International trade in services, debits, year by country and service
- 8 International trade in services, debits, service by year and by country
- 9 International trade in services, credits, year by country and travel service
- 10 International trade in services, debits, year by country and travel service
- 11 International trade in services, credits, education related travel, by educational sector, by type of expenditure by year.

ANALYSIS AND COMMENTS

BALANCE ON GOODS AND SERVICES

The trend estimate of the balance on goods and services was a surplus of \$1,940m in June 2011, a rise of \$128m on the surplus in May 2011.

In seasonally adjusted terms, the balance on goods and services was a surplus of \$2,052m in June 2011, a fall of \$647m on the surplus in May 2011.

The sum of seasonally adjusted balances for the three months to June 2011 was a surplus of \$6,418m, an increase of \$3,457m on the surplus of \$2,961m for the three months to March 2011. However, if seasonal factors used in compiling the quarterly balance of payments are applied, the June quarter 2011 surplus was \$6,168m, an increase of \$2,896m on the revised March quarter 2011 surplus of \$3,272m.

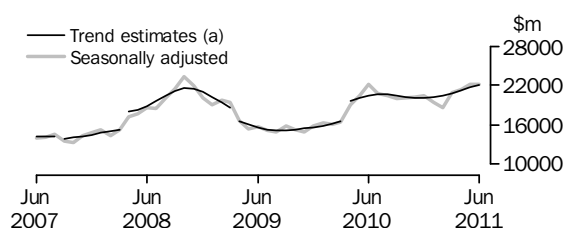
EXPORTS OF GOODS AND SERVICES

Between May 2011 and June 2011 the trend estimate of goods and services credits rose \$393m (2%) to \$26,274m.

In seasonally adjusted terms, goods and services credits fell \$36m to \$26,405m. Non-monetary gold fell \$894m (55%) and net exports of goods under merchanting fell \$2m (6%). Non-rural goods rose \$770m (4%) and rural goods rose \$86m (3%). Services credits rose \$5m.

Exports of goods

GOODS CREDITS



(a) Trend breaks of \$400m to September 2007, \$1,900m to April 2008, -\$1,400m to April 2009 and \$2,500m to April 2010 have been applied.

RURAL GOODS

In trend terms, exports of rural goods rose \$72m (3%) to \$2,858m.

In seasonally adjusted terms, exports of rural goods rose \$86m (3%) to \$2,897m.

The main components contributing to the rise in seasonally adjusted estimates were:

- cereal grains and cereal preparations, up \$43m (6%)
- meat and meat preparations, up \$32m (6%).

NON-RURAL GOODS

In trend terms, exports of non-rural goods rose \$342m (2%) to \$18,017m.

In seasonally adjusted terms, exports of non-rural goods rose \$770m (4%) to \$18,478m.

The main components contributing to the rise in the seasonally adjusted estimates were:

- coal, coke and briquettes, up \$675m (18%)
- metal ores and minerals, up \$317m (4%).

ANALYSIS AND COMMENTS *continued*

Exports of goods continued

NON-RURAL GOODS *continued*

Partly offsetting these increases was the metals (excl. non-monetary gold) component, down \$139m (13%).

For price and volume details, see the section *Commodity value adjustment* on page 4.

NET EXPORTS OF GOODS UNDER MERCHANTING

In trend terms, net exports of goods under merchanting rose \$2m (6%) to \$34m.

In seasonally adjusted terms, net exports of goods under merchanting fell \$2m (6%) to \$33m.

NON-MONETARY GOLD

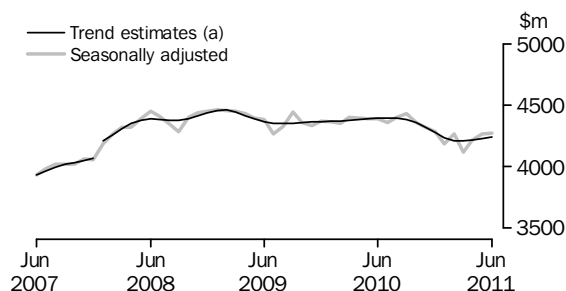
In trend terms, exports of non-monetary gold fell \$39m (3%) to \$1,123m.

In seasonally adjusted terms, exports of non-monetary gold for June 2011 fell \$894m (55%), after rising \$535m (49%) between April and May 2011.

On a recorded trade basis, between May and June 2011, non-monetary gold fell \$873m (56%). This was primarily due to a decrease in exports to United Kingdom, down \$889m, on volumes.

Exports of services

SERVICES CREDITS



(a) A trend break of \$100m has been applied to January 2008.

In trend terms, services credits rose \$16m to \$4,242m.

In seasonally adjusted terms, services credits rose \$5m to \$4,271m.

The main component contributing to the rise in the seasonally adjusted estimates was travel, up \$7m.

In seasonally adjusted terms, tourism related services credits rose \$8m to \$2,866m.

IMPORTS OF GOODS AND SERVICES

Between May 2011 and June 2011 the trend estimate of goods and services debits rose \$264m (1%) to \$24,334m.

In seasonally adjusted terms, goods and services debits rose \$611m (3%) to \$24,353m. Intermediate and other merchandise goods rose \$320m (4%), capital goods rose \$296m (7%) and non-monetary gold rose \$22m (6%) while consumption goods fell \$34m (1%). Services debits rose \$8m.

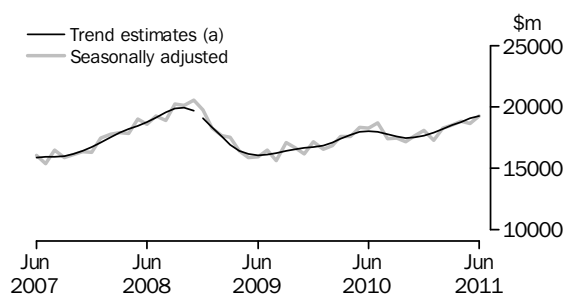
ANALYSIS AND COMMENTS *continued*

IMPORTS OF GOODS AND SERVICES *continued*

Preliminary analysis shows that, in seasonally adjusted terms, goods imports volumes rose 3.3% and the implicit price deflator rose 0.6% during the June quarter 2011. In original terms, the Chain Laspeyres price index rose 0.7% and the implicit price deflator rose 0.1%. The final volume and price outcomes will be published in the June quarter 2011 issue of *Balance of Payments and International Investment Position, Australia* (cat. no. 5302.0).

Imports of goods

GOODS DEBITS



(a) A trend break of -\$200m has been applied to December 2008.

CONSUMPTION GOODS

In trend terms, imports of consumption goods rose \$20m to \$5,355m.

In seasonally adjusted terms, imports of consumption goods fell \$34m (1%) to \$5,199m.

The main components contributing to the fall in the seasonally adjusted estimates were:

- consumption goods n.e.s., down \$57m (3%)
- food and beverages, mainly for consumption, down \$29m (4%).

Partly offsetting these falls was the non-industrial transport equipment component, up \$59m (5%).

CAPITAL GOODS

In trend terms, imports of capital goods rose \$4m to \$4,263m.

In seasonally adjusted terms, imports of capital goods rose \$296m (7%) to \$4,346m.

The main component contributing to the rise in the seasonally adjusted estimates was capital goods n.e.s., up \$304m (57%).

INTERMEDIATE AND OTHER MERCHANDISE GOODS

In trend terms, imports of intermediate and other merchandise goods rose \$162m (2%) to \$9,230m.

In seasonally adjusted terms, imports of intermediate and other merchandise goods rose \$320m (4%) to \$9,304m.

The main component contributing to the rise in the seasonally adjusted estimates was fuels and lubricants, up \$333m (11%).

ANALYSIS AND COMMENTS *continued*

Imports of goods continued

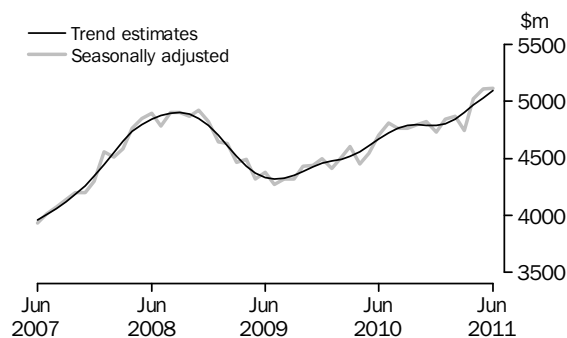
NON-MONETARY GOLD

In trend terms, imports of non-monetary gold rose \$15m (4%) to \$392m.

In seasonally adjusted terms, non-monetary gold rose \$22m (6%) to \$390m.

Imports of services

SERVICES DEBITS



In trend terms, services debits rose \$62m (1%) to \$5,093m.

In seasonally adjusted terms, services debits rose \$8m to \$5,114m.

The main component contributing to the rise in the seasonally adjusted estimates was transport, up \$12m (1%).

In seasonally adjusted terms, tourism related services debits rose \$3m to \$2,865m.

GOODS AND SERVICES(a), Summary—Seasonally Adjusted and Trend Estimates

	Jul 2010	Aug 2010	Sep 2010	Oct 2010	Nov 2010	Dec 2010	Jan 2011	Feb 2011	Mar 2011	Apr 2011	May 2011	Jun 2011
	\$m	\$m	\$m	\$m	\$m	\$m	\$m	\$m	\$m	\$m	\$m	\$m
SEASONALLY ADJUSTED												
BALANCE												
On goods and services	1 622	2 717	2 146	2 497	2 042	1 854	1 475	-264	1 750	1 667	2 699	2 052
CREDITS												
Total goods and services	25 130	24 879	24 396	24 475	24 540	24 696	23 610	22 889	25 030	25 525	26 441	26 405
Total goods	20 771	20 476	19 962	20 119	20 219	20 411	19 425	18 623	20 914	21 306	22 175	22 134
Rural goods(b)	2 551	2 430	2 212	2 421	2 380	2 413	2 334	2 619	2 560	2 723	2 811	2 897
Non-rural goods(b)	16 953	17 182	16 579	16 122	16 584	16 868	15 534	15 133	16 986	17 464	17 708	18 478
Net exports of goods under merchandise(c)	25	25	25	25	25	25	22	22	23	35	35	33
Non-monetary gold(c)	1 242	839	1 146	1 550	1 229	1 105	1 535	849	1 345	1 085	1 620	726
Total services	4 359	4 402	4 434	4 357	4 321	4 286	4 185	4 266	4 117	4 219	4 266	4 271
DEBITS												
Total goods and services	-23 508	-22 161	-22 250	-21 978	-22 498	-22 842	-22 135	-23 153	-23 280	-23 858	-23 742	-24 353
Total goods	-18 695	-17 396	-17 490	-17 185	-17 675	-18 113	-17 292	-18 286	-18 541	-18 834	-18 636	-19 239
Consumption goods	-5 461	-5 463	-5 457	-5 304	-5 344	-5 317	-5 247	-5 247	-5 180	-5 063	-5 233	-5 199
Capital goods	-4 129	-4 024	-3 814	-3 942	-4 178	-4 114	-4 330	-4 354	-4 011	-4 508	-4 050	-4 346
Intermediate and other merchandise goods	-8 718	-7 604	-7 719	-7 337	-7 565	-8 295	-7 429	-8 347	-8 927	-8 871	-8 984	-9 304
Non-monetary gold(c)	-387	-305	-501	-602	-588	-387	-286	-339	-423	-391	-368	-390
Total services	-4 813	-4 766	-4 760	-4 793	-4 823	-4 729	-4 843	-4 866	-4 740	-5 024	-5 106	-5 114
TREND ESTIMATES (d)												
BALANCE												
On goods and services	2 410	2 525	2 485	2 329	2 096	1 864	1 698	1 603	1 609	1 689	1 812	1 940
CREDITS												
Total goods and services	25 074	25 051	24 860	24 605	24 393	24 321	24 429	24 667	25 023	25 449	25 881	26 274
Total goods	20 676	20 656	20 477	20 246	20 073	20 046	20 194	20 453	20 814	21 234	21 655	22 032
Rural goods(b)	2 386	2 398	2 388	2 371	2 368	2 394	2 452	2 531	2 615	2 703	2 786	2 858
Non-rural goods(b)	17 064	17 028	16 850	16 615	16 436	16 377	16 469	16 671	16 965	17 313	17 675	18 017
Net exports of goods under merchandise	25	25	25	25	24	23	24	25	27	30	32	34
Non-monetary gold	1 201	1 204	1 214	1 236	1 245	1 252	1 249	1 227	1 206	1 188	1 162	1 123
Total services	4 398	4 395	4 383	4 359	4 320	4 275	4 236	4 214	4 209	4 215	4 226	4 242
DEBITS												
Total goods and services	-22 663	-22 527	-22 375	-22 276	-22 297	-22 457	-22 732	-23 064	-23 414	-23 759	-24 070	-24 334
Total goods	-17 939	-17 763	-17 587	-17 482	-17 510	-17 670	-17 926	-18 219	-18 513	-18 794	-19 039	-19 241
Consumption goods	-5 495	-5 470	-5 427	-5 372	-5 320	-5 285	-5 269	-5 274	-5 292	-5 314	-5 335	-5 355
Capital goods	-4 073	-4 024	-4 001	-4 018	-4 076	-4 154	-4 218	-4 252	-4 259	-4 259	-4 259	-4 263
Intermediate and other merchandise goods	-7 814	-7 761	-7 681	-7 628	-7 655	-7 794	-8 035	-8 320	-8 598	-8 851	-9 068	-9 230
Non-monetary gold	-557	-508	-478	-464	-458	-438	-404	-374	-365	-370	-377	-392
Total services	-4 724	-4 764	-4 789	-4 794	-4 787	-4 786	-4 805	-4 845	-4 901	-4 966	-5 031	-5 093

(a) For sign conventions, see paragraph 15 of the Explanatory Notes.

(b) For all time periods, estimates for sugar, sugar preparations and honey are included in Non-rural goods.

(c) This component is not seasonally adjusted.

(d) Caution should be used when interpreting recent trend estimates as they may be affected by unusual economic factors. For more details on trend estimates, please see paragraph 19 of the Explanatory Notes.

GOODS AND SERVICES(a), Summary—Original

	Jul 2010	Aug 2010	Sep 2010	Oct 2010	Nov 2010	Dec 2010	Jan 2011	Feb 2011	Mar 2011	Apr 2011	May 2011	Jun 2011
	\$m	\$m	\$m	\$m	\$m	\$m	\$m	\$m	\$m	\$m	\$m	\$m
BALANCE												
On goods and services	1 699	3 222	1 083	2 098	250	2 155	441	784	2 570	2 359	3 740	2 012
CREDITS												
Total goods and services	25 680	25 540	24 619	25 204	24 097	25 671	21 658	21 757	25 904	25 053	26 769	26 217
Total goods	21 274	21 078	20 270	20 668	19 736	21 396	17 599	17 438	21 655	20 788	22 594	22 217
Rural goods(b)	2 555	2 384	2 119	2 360	2 212	2 489	2 037	2 647	2 844	2 812	3 076	2 936
Non-rural goods(b)	17 452	17 830	16 980	16 733	16 270	17 777	14 005	13 920	17 443	16 856	17 863	18 522
Net exports of goods under merchandising	25	25	25	25	25	25	22	22	23	35	35	33
Non-monetary gold	1 242	839	1 146	1 550	1 229	1 105	1 535	849	1 345	1 085	1 620	726
Total services	4 406	4 462	4 349	4 536	4 361	4 275	4 059	4 319	4 249	4 265	4 175	4 000
DEBITS												
Total goods and services	-23 981	-22 318	-23 536	-23 106	-23 847	-23 516	-21 217	-20 973	-23 334	-22 694	-23 029	-24 205
Total goods	-18 896	-17 589	-18 372	-18 043	-19 176	-18 509	-16 169	-16 826	-18 896	-17 762	-18 167	-18 991
Consumption goods	-5 612	-5 591	-5 985	-5 870	-6 130	-5 405	-4 699	-4 768	-5 027	-4 598	-4 888	-4 994
Capital goods	-4 100	-4 015	-3 934	-4 062	-4 615	-4 334	-3 940	-3 899	-4 186	-4 183	-4 061	-4 465
Intermediate and other merchandise goods	-8 797	-7 678	-7 952	-7 509	-7 843	-8 383	-7 244	-7 820	-9 260	-8 590	-8 850	-9 142
Non-monetary gold	-387	-305	-501	-602	-588	-387	-286	-339	-423	-391	-368	-390
Total services	-5 085	-4 729	-5 164	-5 063	-4 671	-5 007	-5 048	-4 147	-4 438	-4 932	-4 862	-5 214

(a) For sign conventions, see paragraph 15 of the Explanatory Notes.

(b) For all time periods, estimates for sugar, sugar preparations and honey are included in Non-rural goods.

							12 MONTHS ENDED JUNE		Change
	2008-09	2009-10	2010-11	Apr 2011	May 2011	Jun 2011	2010	2011	
	\$m	\$m	\$m	\$m	\$m	\$m	\$m	\$m	%
Total goods credits	231 564	201 809	246 713	20 788	22 594	22 217	201 809	246 713	22.3
General merchandise	213 755	187 259	232 122	19 668	20 939	21 458	187 259	232 122	24.0
<i>Rural goods(a)</i>	29 383	25 589	30 471	2 812	3 076	2 936	25 589	30 471	19.1
Meat and meat preparations	7 454	6 350	6 941	588	597	617	6 350	6 941	9.3
Cereal grains and cereal preparations	6 881	5 266	7 358	777	827	680	5 266	7 358	39.7
Wool and sheepskins	2 322	2 306	3 053	338	281	255	2 306	3 053	32.4
Other rural(a)	12 726	11 667	13 119	1 109	1 371	1 384	11 667	13 119	12.4
<i>Non-rural goods(a)</i>	184 372	161 670	201 651	16 856	17 863	18 522	161 670	201 651	24.7
Metal ores and minerals	52 015	53 669	79 231	6 882	7 205	7 665	53 669	79 231	47.6
Coal, coke and briquettes	54 957	36 777	43 902	3 471	3 822	4 364	36 777	43 902	19.4
Other mineral fuels	20 707	18 964	23 615	2 129	2 046	2 113	18 964	23 615	24.5
Metals (excl. non-monetary gold)	12 394	10 735	12 707	1 066	1 208	952	10 735	12 707	18.4
Machinery	8 900	7 977	8 461	692	705	698	7 977	8 461	6.1
Transport equipment	5 090	4 073	3 909	314	412	333	4 073	3 909	-4.0
Other manufactures	17 601	16 375	16 298	1 239	1 393	1 399	16 375	16 298	-0.5
Other non-rural (incl. sugar and beverages)	11 077	11 711	11 938	923	935	861	11 711	11 938	1.9
Goods procured in ports by carriers	1 631	1 389	1 590	140	137	137	1 389	1 590	14.5
Net exports of goods under merchanting	301	250	320	35	35	33	250	320	28.0
Goods acquired under merchanting									
(negative exports)	-2 386	-1 799	-1 735	-94	-94	-95	-1 799	-1 735	3.6
Goods sold under merchanting	2 687	2 049	2 055	129	129	128	2 049	2 055	0.3
Non-monetary gold	17 508	14 300	14 271	1 085	1 620	726	14 300	14 271	-0.2

(a) For all time periods, estimates for sugar, sugar preparations and honey are included in Other non-rural.

GOODS DEBITS(a), Original

							12 MONTHS ENDED JUNE		Change
	2008-09	2009-10	2010-11	Apr 2011	May 2011	Jun 2011	2010	2011	
	\$m	\$m	\$m	\$m	\$m	\$m	\$m	\$m	%
Total goods debits	-220 649	-204 166	-217 396	-17 762	-18 167	-18 991	-204 166	-217 396	-6.5
General merchandise	-209 127	-197 303	-212 429	-17 371	-17 799	-18 601	-197 303	-212 429	-7.7
Consumption goods	-61 419	-62 333	-63 567	-4 598	-4 888	-4 994	-62 333	-63 567	-2.0
Food and beverages, mainly for consumption	-8 857	-8 712	-8 952	-674	-715	-696	-8 712	-8 952	-2.8
Household electrical items	-5 488	-5 505	-4 859	-351	-378	-392	-5 505	-4 859	11.7
Non-industrial transport equipment	-13 247	-16 288	-15 955	-927	-1 101	-1 313	-16 288	-15 955	2.0
Textiles, clothing and footwear	-8 287	-7 514	-8 414	-667	-617	-630	-7 514	-8 414	-12.0
Toys, books and leisure goods	-5 277	-4 675	-4 441	-291	-336	-345	-4 675	-4 441	5.0
Consumption goods n.e.s.	-20 263	-19 639	-20 946	-1 688	-1 741	-1 618	-19 639	-20 946	-6.7
Capital goods	-49 843	-46 517	-49 794	-4 183	-4 061	-4 465	-46 517	-49 794	-7.0
Machinery and industrial equipment	-18 488	-15 561	-15 730	-1 223	-1 361	-1 396	-15 561	-15 730	-1.1
ADP equipment	-7 257	-7 633	-7 786	-664	-685	-759	-7 633	-7 786	-2.0
Telecommunications equipment	-6 431	-6 051	-7 008	-466	-524	-590	-6 051	-7 008	-15.8
Civil aircraft and confidentialised items(b)	-5 524	-5 051	-5 309	-716	-415	-345	-5 051	-5 309	-5.1
Industrial transport equipment n.e.s.	-6 527	-6 804	-6 859	-482	-536	-530	-6 804	-6 859	-0.8
Capital goods n.e.s.	-5 616	-5 417	-7 102	-632	-540	-845	-5 417	-7 102	-31.1
Intermediate and other merchandise goods	-97 865	-88 453	-99 068	-8 590	-8 850	-9 142	-88 453	-99 068	-12.0
Food and beverages, mainly for industry	-1 186	-1 035	-1 223	-125	-97	-112	-1 035	-1 223	-18.2
Primary industrial supplies n.e.s.	-1 901	-1 346	-1 712	-119	-196	-161	-1 346	-1 712	-27.2
Fuels and lubricants	-28 213	-26 494	-32 075	-3 240	-3 050	-3 383	-26 494	-32 075	-21.1
Parts for transport equipment	-8 599	-8 221	-8 882	-746	-824	-779	-8 221	-8 882	-8.0
Parts for ADP equipment	-1 067	-973	-906	-72	-69	-74	-973	-906	6.9
Other parts for capital goods	-14 312	-13 755	-14 297	-1 179	-1 263	-1 251	-13 755	-14 297	-3.9
Organic and inorganic chemicals	-5 384	-4 355	-4 470	-345	-345	-338	-4 355	-4 470	-2.6
Paper and paperboard	-2 403	-2 299	-2 339	-154	-170	-180	-2 299	-2 339	-1.7
Textile yarn and fabrics	-1 344	-1 170	-1 134	-90	-97	-91	-1 170	-1 134	3.1
Iron and steel	-5 528	-3 258	-3 763	-306	-286	-344	-3 258	-3 763	-15.5
Plastics	-3 028	-2 733	-2 884	-236	-252	-233	-2 733	-2 884	-5.5
Processed industrial supplies n.e.s.	-21 919	-20 026	-21 919	-1 730	-1 915	-1 914	-20 026	-21 919	-9.5
Other merchandise goods(b)	-1 401	-1 392	-1 828	-100	-138	-136	-1 392	-1 828	-31.3
Goods procured in ports by carriers	-1 580	-1 396	-1 636	-148	-148	-146	-1 396	-1 636	-17.2
Non-monetary gold	-11 522	-6 863	-4 967	-391	-368	-390	-6 863	-4 967	27.6

(a) For sign conventions, see paragraph 15 of the Explanatory Notes.

(b) From July 2008, commodities subject to a 'no commodity details' or 'no value details' restriction are included in Civil aircraft and confidentialised items. For earlier periods, commodities subject to a 'no commodity details' or 'no value details' restriction are included in Other merchandise goods.

GOODS CREDITS, Seasonally Adjusted

	Sep 2010	Oct 2010	Nov 2010	Dec 2010	Jan 2011	Feb 2011	Mar 2011	Apr 2011	May 2011	Jun 2011
	\$m	\$m	\$m	\$m	\$m	\$m	\$m	\$m	\$m	\$m
Total goods credits	19 962	20 119	20 219	20 411	19 425	18 623	20 914	21 306	22 175	22 134
General merchandise	18 791	18 544	18 965	19 281	17 868	17 752	19 546	20 186	20 520	21 375
<i>Rural goods</i>	2 212	2 421	2 380	2 413	2 334	2 619	2 560	2 723	2 811	2 897
Meat and meat preparations	536	540	577	609	504	632	592	590	563	595
Cereal grains and cereal preparations	541	699	571	547	594	638	615	681	701	744
Wool and sheepskins	206	204	235	282	250	282	280	291	278	270
Other rural(a)	929	978	997	975	986	1 066	1 073	1 160	1 270	1 287
<i>Non-rural goods</i>	16 579	16 122	16 584	16 868	15 534	15 133	16 986	17 464	17 708	18 478
Metal ores and minerals	6 261	6 256	6 580	6 503	6 548	5 837	6 942	7 237	7 092	7 409
Coal, coke and briquettes(b)	4 171	3 806	3 664	3 645	2 628	2 772	3 197	3 522	3 753	4 428
Other mineral fuels(c)	1 710	1 617	1 887	1 944	1 896	1 922	2 154	2 136	2 292	2 206
Metals (excl. non-monetary gold)(c)	950	985	1 042	1 127	1 056	1 212	1 188	1 081	1 084	945
Machinery	647	689	672	758	692	689	705	718	695	708
Transport equipment	319	280	287	304	324	362	324	358	383	358
Other manufactures	1 327	1 376	1 322	1 460	1 260	1 370	1 384	1 347	1 363	1 365
Other non-rural (incl. sugar and beverages)	1 071	986	1 004	997	999	834	952	919	908	914
Goods procured in ports by carriers(c)	123	127	125	129	130	136	138	146	139	146
Net exports of goods under merchanting(d)	25	25	25	25	22	22	23	35	35	33
Non-monetary gold(d)	1 146	1 550	1 229	1 105	1 535	849	1 345	1 085	1 620	726

- (a) For all time periods, estimates for sugar, sugar preparations and honey are included in Other non-rural.
- (b) Only a length-of-month adjustment has been applied to this component.

- (c) In using these seasonally adjusted series, care should be exercised because of the difficulties associated with reliably estimating the seasonal pattern.
- (d) This component is not seasonally adjusted.

GOODS DEBITS(a), Seasonally Adjusted

	Sep 2010	Oct 2010	Nov 2010	Dec 2010	Jan 2011	Feb 2011	Mar 2011	Apr 2011	May 2011	Jun 2011
	\$m	\$m	\$m	\$m	\$m	\$m	\$m	\$m	\$m	\$m
Total goods debits	-17 490	-17 185	-17 675	-18 113	-17 292	-18 286	-18 541	-18 834	-18 636	-19 239
General merchandise	-16 989	-16 583	-17 087	-17 726	-17 006	-17 947	-18 118	-18 443	-18 268	-18 849
Consumption goods	-5 457	-5 304	-5 344	-5 317	-5 247	-5 247	-5 180	-5 063	-5 233	-5 199
Food and beverages, mainly for consumption	-773	-737	-720	-718	-714	-722	-735	-751	-782	-753
Household electrical items	-434	-409	-420	-379	-376	-379	-373	-400	-398	-395
Non-industrial transport equipment	-1 385	-1 389	-1 409	-1 413	-1 359	-1 359	-1 379	-957	-1 176	-1 235
Textiles, clothing and footwear	-713	-678	-698	-686	-660	-713	-656	-735	-759	-746
Toys, books and leisure goods	-388	-401	-393	-382	-367	-353	-325	-352	-335	-343
Consumption goods n.e.s.	-1 763	-1 689	-1 705	-1 740	-1 772	-1 721	-1 712	-1 869	-1 783	-1 726
Capital goods	-3 814	-3 942	-4 178	-4 114	-4 330	-4 354	-4 011	-4 508	-4 050	-4 346
Machinery and industrial equipment	-1 338	-1 278	-1 262	-1 229	-1 257	-1 343	-1 287	-1 356	-1 382	-1 374
ADP equipment	-658	-608	-623	-612	-602	-589	-653	-659	-645	-664
Telecommunications equipment	-561	-607	-616	-574	-674	-565	-541	-522	-525	-585
Civil aircraft and confidentialised items(b)(c)	-327	-274	-614	-541	-474	-629	-306	-716	-415	-345
Industrial transport equipment n.e.s.	-478	-585	-539	-556	-668	-590	-562	-542	-553	-544
Capital goods n.e.s.	-452	-589	-525	-602	-655	-638	-663	-713	-530	-834
Intermediate and other merchandise goods	-7 719	-7 337	-7 565	-8 295	-7 429	-8 347	-8 927	-8 871	-8 984	-9 304
Food and beverages, mainly for industry	-89	-99	-98	-93	-88	-131	-104	-125	-104	-117
Primary industrial supplies n.e.s.(d)	-136	-132	-136	-117	-116	-120	-145	-145	-237	-160
Fuels and lubricants(c)	-2 301	-2 112	-2 416	-2 887	-2 140	-2 722	-3 317	-3 240	-3 050	-3 383
Parts for transport equipment	-721	-684	-680	-684	-724	-715	-795	-769	-824	-807
Parts for ADP equipment	-81	-84	-82	-73	-73	-70	-69	-73	-65	-68
Other parts for capital goods	-1 170	-1 141	-1 145	-1 175	-1 143	-1 214	-1 161	-1 193	-1 255	-1 256
Organic and inorganic chemicals	-350	-356	-360	-358	-353	-354	-410	-364	-337	-365
Paper and paperboard	-200	-194	-196	-196	-192	-185	-183	-184	-188	-192
Textile yarn and fabrics	-95	-90	-88	-92	-89	-93	-94	-100	-100	-95
Iron and steel	-298	-301	-281	-301	-254	-327	-281	-327	-328	-351
Plastics	-247	-230	-218	-221	-232	-231	-237	-250	-254	-245
Processed industrial supplies n.e.s.	-1 770	-1 713	-1 670	-1 734	-1 810	-1 960	-1 863	-1 855	-1 956	-1 984
Other merchandise goods(b)(e)	-135	-77	-72	-239	-69	-81	-122	-100	-138	-136
Goods procured in ports by carriers(c)	-128	-123	-123	-124	-146	-146	-146	-148	-148	-146
Non-monetary gold(c)	-501	-602	-588	-387	-286	-339	-423	-391	-368	-390

(a) For sign conventions, see paragraph 15 of the Explanatory Notes.

(b) From July 2008, commodities subject to a 'no commodity details' or 'no value details' restriction are included in Civil aircraft and confidentialised items. For earlier periods, commodities subject to a 'no commodity details' or 'no value details' restriction are included in Other merchandise goods.

(c) This component is not seasonally adjusted.

(d) In using these seasonally adjusted series, care should be exercised because of the difficulties associated with reliably estimating the seasonal pattern.

(e) From July 1981, this component is not seasonally adjusted.

GOODS CREDITS(a), Trend Estimates

	Sep 2010	Oct 2010	Nov 2010	Dec 2010	Jan 2011	Feb 2011	Mar 2011	Apr 2011	May 2011	Jun 2011
	\$m	\$m	\$m	\$m	\$m	\$m	\$m	\$m	\$m	\$m
Total goods credits	20 477	20 246	20 073	20 046	20 194	20 453	20 814	21 234	21 655	22 032
General merchandise	19 238	18 986	18 804	18 771	18 921	19 202	19 580	20 017	20 462	20 875
<i>Rural goods</i>	2 388	2 371	2 368	2 394	2 452	2 531	2 615	2 703	2 786	2 858
Meat and meat preparations	568	561	561	569	578	584	586	587	587	587
Cereal grains and cereal preparations	558	580	591	597	603	618	641	670	699	724
Wool and sheepskins	218	226	237	252	266	275	280	281	281	279
Other rural(b)	1 043	1 005	978	976	1 005	1 054	1 108	1 164	1 219	1 268
<i>Non-rural goods</i>	16 850	16 615	16 436	16 377	16 469	16 671	16 965	17 313	17 675	18 017
Metal ores and minerals	6 368	6 338	6 327	6 364	6 456	6 577	6 744	6 942	7 134	7 314
Coal, coke and briquettes	4 097	3 934	3 761	3 604	3 501	3 479	3 536	3 642	3 782	3 936
Other mineral fuels	1 815	1 798	1 809	1 853	1 928	2 011	2 085	2 150	2 205	2 252
Metals (excl. non-monetary gold)	992	1 011	1 046	1 088	1 124	1 139	1 130	1 105	1 073	1 037
Machinery	706	700	697	699	703	706	705	704	704	701
Transport equipment	301	297	299	307	321	335	348	357	365	370
Other manufactures	1 363	1 358	1 356	1 357	1 357	1 357	1 357	1 359	1 361	1 359
Other non-rural (incl. sugar and beverages)	1 081	1 053	1 015	976	948	933	922	913	907	904
Goods procured in ports by carriers	127	126	127	129	132	135	138	141	144	145
Net exports of goods under merchanting	25	25	24	23	24	25	27	30	32	34
Non-monetary gold	1 214	1 236	1 245	1 252	1 249	1 227	1 206	1 188	1 162	1 123

(a) Caution should be used when interpreting recent trend estimates as they may be affected by unusual economic factors. For more details on trend estimates, please see paragraph 19 of the Explanatory Notes.

(b) For all time periods, estimates for sugar, sugar preparations and honey are included in Other non-rural.

GOODS DEBITS(a)(b), Trend Estimates

	Sep 2010	Oct 2010	Nov 2010	Dec 2010	Jan 2011	Feb 2011	Mar 2011	Apr 2011	May 2011	Jun 2011
	\$m	\$m	\$m	\$m	\$m	\$m	\$m	\$m	\$m	\$m
Total goods debits	-17 587	-17 482	-17 510	-17 670	-17 926	-18 219	-18 513	-18 794	-19 039	-19 241
General merchandise	-17 109	-17 017	-17 052	-17 232	-17 522	-17 845	-18 148	-18 424	-18 662	-18 849
Consumption goods	-5 427	-5 372	-5 320	-5 285	-5 269	-5 274	-5 292	-5 314	-5 335	-5 355
Food and beverages, mainly for consumption	-759	-745	-729	-720	-720	-727	-738	-748	-758	-766
Household electrical items	-426	-412	-400	-391	-384	-382	-384	-388	-392	-397
Non-industrial transport equipment	-1 399	-1 390	-1 389	-1 386	-1 379	-1 367	-1 355	-1 346	-1 338	-1 334
Textiles, clothing and footwear	-705	-698	-688	-682	-682	-690	-703	-718	-733	-747
Toys, books and leisure goods	-393	-391	-387	-378	-367	-355	-346	-341	-337	-335
Consumption goods n.e.s.	-1 745	-1 735	-1 726	-1 728	-1 738	-1 753	-1 766	-1 773	-1 777	-1 775
Capital goods	-4 001	-4 018	-4 076	-4 154	-4 218	-4 252	-4 259	-4 259	-4 259	-4 263
Machinery and industrial equipment	-1 301	-1 279	-1 265	-1 264	-1 275	-1 295	-1 320	-1 344	-1 364	-1 382
ADP equipment	-665	-637	-617	-607	-608	-619	-631	-643	-653	-662
Telecommunications equipment	-604	-612	-614	-608	-594	-578	-562	-549	-541	-539
Civil aircraft and confidentialised items(c)	-368	-402	-449	-499	-530	-532	-513	-487	-457	-433
Industrial transport equipment n.e.s.	-565	-558	-564	-577	-587	-587	-577	-564	-553	-541
Capital goods n.e.s.	-498	-529	-567	-600	-624	-641	-656	-672	-691	-706
Intermediate and other merchandise goods	-7 681	-7 628	-7 655	-7 794	-8 035	-8 320	-8 598	-8 851	-9 068	-9 230
Food and beverages, mainly for industry	-92	-94	-96	-99	-104	-108	-112	-114	-116	-117
Primary industrial supplies n.e.s.	-130	-127	-123	-121	-124	-133	-147	-162	-175	-188
Fuels and lubricants	-2 256	-2 285	-2 363	-2 486	-2 647	-2 816	-2 977	-3 123	-3 243	-3 332
Parts for transport equipment	-708	-696	-691	-697	-714	-738	-762	-784	-803	-817
Parts for ADP equipment	-84	-82	-79	-76	-74	-72	-70	-69	-68	-67
Other parts for capital goods	-1 183	-1 172	-1 159	-1 156	-1 163	-1 177	-1 193	-1 210	-1 227	-1 242
Organic and inorganic chemicals	-382	-368	-358	-357	-361	-366	-367	-366	-364	-361
Paper and paperboard	-203	-199	-195	-192	-190	-188	-186	-186	-186	-187
Textile yarn and fabrics	-95	-92	-90	-90	-91	-93	-95	-96	-98	-98
Iron and steel	-316	-301	-289	-284	-287	-296	-306	-317	-329	-339
Plastics	-243	-235	-228	-225	-228	-233	-239	-244	-248	-251
Processed industrial supplies n.e.s.	-1 756	-1 737	-1 738	-1 761	-1 802	-1 847	-1 886	-1 917	-1 943	-1 961
Other merchandise goods(c)	-106	-114	-118	-117	-115	-112	-112	-115	-119	-120
Goods procured in ports by carriers	-125	-126	-128	-132	-137	-142	-146	-148	-149	-149
Non-monetary gold	-478	-464	-458	-438	-404	-374	-365	-370	-377	-392

(a) For sign conventions, see paragraph 15 of the Explanatory Notes.

(b) Caution should be used when interpreting recent trend estimates as they may be affected by unusual economic factors. For more details on trend estimates, please see paragraph 19 of the Explanatory Notes.

(c) From July 2008, commodities subject to a 'no commodity details' or 'no value details' restriction are included in Civil aircraft and confidentialised items. For earlier periods, commodities subject to a 'no commodity details' or 'no value details' restriction are included in Other merchandise goods.

							12 MONTHS ENDED JUNE		Change
	2008-09	2009-10	2010-11	Apr 2011	May 2011	Jun 2011	2010	2011	
	\$m	\$m	\$m	\$m	\$m	\$m	\$m	\$m	%
Services credits	52 877	52 323	51 456	4 265	4 175	4 000	52 323	51 456	-1.7
Manufacturing services on physical inputs owned by others	258	284	197	20	16	13	284	197	-30.6
Maintenance and repair services n.i.e.	86	57	50	3	3	4	57	50	-12.3
Transport	7 342	6 189	6 437	507	482	485	6 189	6 437	4.0
Passenger(c)	3 410	2 610	2 825	216	191	194	2 610	2 825	8.2
Freight	851	436	424	39	39	38	436	424	-2.8
Other	2 127	2 187	2 255	183	183	183	2 187	2 255	3.1
Postal and courier services(d)	954	956	933	69	69	70	956	933	-2.4
Travel	31 096	33 020	31 717	2 622	2 560	2 392	33 020	31 717	-3.9
Other services	14 095	12 773	13 055	1 113	1 114	1 106	12 773	13 055	2.2
Services debits	-56 170	-53 433	-58 360	-4 932	-4 862	-5 214	-53 433	-58 360	-9.2
Manufacturing services on physical inputs owned by others	-4	-6	-5	—	—	—	-6	-5	16.7
Maintenance and repair services n.i.e.	-193	-294	-339	-28	-65	-58	-294	-339	-15.3
Transport	-15 832	-13 727	-14 923	-1 195	-1 238	-1 337	-13 727	-14 923	-8.7
Passenger(c)	-5 835	-5 118	-6 261	-537	-545	-625	-5 118	-6 261	-22.3
Freight	-9 386	-8 142	-8 251	-625	-660	-682	-8 142	-8 251	-1.3
Other	-437	-309	-287	-24	-24	-22	-309	-287	7.1
Postal and courier services(d)	-174	-158	-124	-9	-9	-8	-158	-124	21.5
Travel	-22 082	-23 285	-25 868	-2 247	-2 083	-2 338	-23 285	-25 868	-11.1
Other services	-18 059	-16 121	-17 225	-1 462	-1 476	-1 481	-16 121	-17 225	-6.8
Memorandum items:									
Tourism related service credits(e)	34 506	35 630	34 542	2 838	2 751	2 586	35 630	34 542	-3.1
Tourism related service debits(e)	-27 917	-28 403	-32 129	-2 784	-2 628	-2 963	-28 403	-32 129	-13.1

— nil or rounded to zero (including null cells)

(a) For sign conventions, see paragraph 15 of the Explanatory Notes.

(b) For more detailed trade in services components, see table 11.

(c) Passenger services includes agency fees and commissions for air transport.

(d) Postal and courier services includes indirect commissions for sea transport.

(e) For a more detailed explanation of tourism related services, see paragraph 27 of the Explanatory Notes.

	Sep 2010	Oct 2010	Nov 2010	Dec 2010	Jan 2011	Feb 2011	Mar 2011	Apr 2011	May 2011	Jun 2011
	\$m	\$m	\$m	\$m	\$m	\$m	\$m	\$m	\$m	\$m
SEASONALLY ADJUSTED										
Services credits	4 434	4 357	4 321	4 286	4 185	4 266	4 117	4 219	4 266	4 271
Manufacturing services on physical inputs owned by others(b)	17	20	20	16	12	8	23	20	16	13
Maintenance and repair services n.i.e.(b)	4	4	8	6	2	3	3	3	3	4
Transport	559	531	509	517	546	536	528	534	536	537
Passenger(c)	241	240	222	231	245	235	230	235	238	240
Freight(d)	35	33	33	33	39	38	37	37	36	33
Other	200	182	179	177	186	187	189	187	188	189
Postal and courier services(e)	84	77	76	76	76	75	73	75	74	76
Travel	2 758	2 702	2 686	2 655	2 556	2 646	2 487	2 579	2 619	2 626
Other services	1 096	1 100	1 098	1 092	1 069	1 074	1 076	1 083	1 092	1 090
Services debits	-4 760	-4 793	-4 823	-4 729	-4 843	-4 866	-4 740	-5 024	-5 106	-5 114
Manufacturing services on physical inputs owned by others(b)	—	—	-1	—	—	—	-1	—	—	—
Maintenance and repair services n.i.e.(b)	-11	-31	-16	-17	-20	-17	-35	-28	-65	-58
Transport	-1 239	-1 195	-1 239	-1 167	-1 193	-1 223	-1 227	-1 269	-1 295	-1 307
Passenger(c)	-492	-502	-549	-495	-517	-519	-525	-565	-561	-561
Freight	-709	-662	-659	-642	-642	-671	-669	-671	-700	-715
Other(b)	-25	-24	-24	-23	-24	-24	-25	-24	-24	-22
Postal and courier services(e)(d)	-13	-7	-7	-6	-10	-10	-8	-9	-9	-9
Travel	-2 099	-2 103	-2 099	-2 096	-2 200	-2 201	-2 051	-2 283	-2 301	-2 304
Other services	-1 411	-1 464	-1 467	-1 449	-1 430	-1 425	-1 426	-1 444	-1 446	-1 445
Memorandum items:										
Tourism related service credits(f)	2 999	2 942	2 908	2 886	2 801	2 881	2 716	2 813	2 858	2 866
Tourism related service debits(f)	-2 592	-2 605	-2 649	-2 591	-2 717	-2 720	-2 576	-2 848	-2 862	-2 865

TREND ESTIMATES

Services credits	4 383	4 359	4 320	4 275	4 236	4 214	4 209	4 215	4 226	4 242
Manufacturing services on physical inputs owned by others	17	17	17	16	16	16	16	16	17	17
Maintenance and repair services n.i.e.	5	5	5	5	4	4	3	3	3	3
Transport	542	536	531	528	528	531	534	535	536	536
Passenger(c)	236	236	235	234	234	234	235	236	237	237
Freight	34	34	34	35	36	37	37	36	36	35
Other	191	187	184	183	183	185	187	188	189	189
Postal and courier services(e)	81	79	78	76	75	75	75	75	75	75
Travel	2 722	2 704	2 676	2 640	2 607	2 585	2 577	2 579	2 586	2 597
Other services	1 097	1 096	1 092	1 086	1 081	1 079	1 079	1 082	1 085	1 088
Services debits	-4 789	-4 794	-4 787	-4 786	-4 805	-4 845	-4 901	-4 966	-5 031	-5 093
Manufacturing services on physical inputs owned by others	-1	—	—	—	—	—	—	—	—	—
Maintenance and repair services n.i.e.	-20	-19	-18	-18	-20	-25	-32	-40	-48	-56
Transport	-1 246	-1 225	-1 205	-1 196	-1 202	-1 218	-1 239	-1 261	-1 281	-1 302
Passenger(c)	-502	-510	-513	-515	-520	-527	-536	-546	-555	-566
Freight	-710	-681	-659	-649	-650	-659	-670	-682	-693	-704
Other	-24	-24	-24	-24	-24	-24	-24	-24	-24	-23
Postal and courier services(e)	-11	-10	-9	-8	-8	-9	-9	-9	-9	-9
Travel	-2 092	-2 105	-2 113	-2 124	-2 142	-2 166	-2 196	-2 229	-2 262	-2 291
Other services	-1 429	-1 445	-1 450	-1 448	-1 441	-1 436	-1 434	-1 436	-1 439	-1 443
Memorandum items:										
Tourism related service credits(f)	2 958	2 940	2 911	2 874	2 841	2 819	2 813	2 815	2 823	2 834
Tourism related service debits(f)	-2 594	-2 615	-2 627	-2 640	-2 662	-2 693	-2 732	-2 775	-2 817	-2 857

— nil or rounded to zero (including null cells)

(a) For sign conventions, see paragraph 15 of the Explanatory Notes.

(b) This component is not seasonally adjusted.

(c) Passenger services includes agency fees and commissions for air transport.

(d) In using these seasonally adjusted series, care should be exercised because of the difficulties associated with reliably estimating the seasonal pattern.

(e) Postal and courier services includes indirect commissions for sea transport.

(f) For a more detailed explanation of tourism related services, see paragraph 27 of the Explanatory Notes.

	CREDITS				DEBITS			
	Sep Qtr	Dec Qtr	Mar Qtr	Jun Qtr	Sep Qtr	Dec Qtr	Mar Qtr	Jun Qtr
	2010	2010	2011	2011	2010	2010	2011	2011
	\$m	\$m	\$m	\$m	\$m	\$m	\$m	\$m
Services	13 217	13 172	12 627	12 440	-14 978	-14 741	-13 633	-15 008
Manufacturing services on physical inputs owned by others	49	56	43	49	-3	-1	-1	—
Maintenance and repair services n.i.e.	14	18	8	10	-52	-64	-72	-151
Transport	1 701	1 595	1 667	1 474	-3 951	-3 805	-3 397	-3 770
Passenger(b)	682	727	815	601	-1 558	-1 572	-1 424	-1 707
Freight	106	94	108	116	-2 257	-2 147	-1 880	-1 967
Other	605	560	541	549	-73	-71	-73	-70
Postal and courier services(c)	308	214	203	208	-63	-15	-20	-26
Travel	8 269	8 030	7 844	7 574	-6 829	-6 374	-5 997	-6 668
Business	761	753	900	847	-871	-793	-832	-767
Personal	7 508	7 277	6 944	6 727	-5 958	-5 581	-5 165	-5 901
Education-related	4 638	3 931	3 778	4 084	-317	-189	-226	-206
Other(d)	2 870	3 346	3 166	2 643	-5 641	-5 392	-4 939	-5 695
Construction	23	15	20	40	—	—	—	—
Insurance and pension services	82	79	83	134	-152	-149	-154	-157
Financial services	235	245	259	249	-164	-215	-164	-172
Charges for the use of intellectual property n.i.e.	202	304	177	202	-920	-983	-950	-1 042
Telecommunications, computer and information services	407	470	428	452	-490	-571	-485	-514
Telecommunication services	44	40	35	31	-100	-114	-109	-91
Computer and information services	363	430	393	421	-390	-457	-376	-423
Computer services	302	356	341	365	-316	-383	-311	-352
Information services	20	32	14	17	-19	-21	-17	-20
Other services	41	42	38	39	-55	-53	-48	-51
Other business services	1 825	1 983	1 619	1 772	-1 901	-1 976	-1 749	-1 933
Research and development services	132	168	107	122	-42	-70	-48	-52
Professional and management consulting services	736	851	738	823	-652	-705	-615	-665
Legal, accounting, management consulting, public relations and other professional services	668	740	646	733	-611	-651	-567	-609
Advertising, market research and public opinion polling	68	111	92	90	-41	-54	-48	-56
Technical, trade-related and other business services	957	964	774	827	-1 207	-1 201	-1 086	-1 216
Architectural, engineering and other technical services	474	472	426	462	-661	-634	-668	-735
Waste treatment and de-pollution, agricultural and mining services	94	121	36	34	-146	-204	-73	-83
Operational leasing services	72	53	57	49	-140	-129	-129	-153
Trade-related commission services	203	210	160	179	-57	-53	-55	-61
Other business services n.i.e.	114	108	95	103	-203	-181	-161	-184
Personal, cultural and recreational services	200	167	263	268	-294	-381	-442	-379
Audiovisual and related services	34	27	72	49	-252	-310	-338	-345
Other personal, cultural and recreational services	166	140	191	219	-42	-71	-104	-34
Government goods and services n.i.e.	210	210	216	216	-222	-222	-222	-222
Memorandum items:								
Gross insurance premiums receivable / payable	211	215	203	322	-302	-296	-335	-347
Gross insurance claims payable / receivable	-146	-144	-137	-234	193	188	226	238
Tourism related services(e)	8 951	8 757	8 659	8 175	-8 387	-7 946	-7 421	-8 375

— nil or rounded to zero (including null cells)

(a) For sign conventions, see paragraph 15 of the Explanatory Notes.

(b) Passenger services includes agency fees and commissions for air transport.

(c) Postal and courier services includes indirect commissions for sea transport.

(d) Other personal travel includes health-related travel.

(e) For a more detailed explanation of tourism related services, see paragraph 27 of the Explanatory Notes.

				Per cent of total merchandise exports(b)	12 MONTHS ENDED JUNE	
	Apr 2011	May 2011	Jun 2011		2010	2011
	\$m	\$m	\$m	%	\$m	\$m
MAJOR COMMODITIES (c)						
011 Meat of bovine animals	388	383	419	1.9	4 109	4 535
041 Wheat and meslin	555	575	469	2.2	3 636	5 493
281 Iron ore and concentrates	5 050	5 654	5 211	24.2	35 075	58 037
283 Copper ores and concentrates	439	337	539	2.5	4 529	5 102
285 Aluminium ores and concentrates	436	487	467	2.2	5 042	5 254
287 Ores and concentrates of base metals, n.e.s.	456	286	479	2.2	3 915	4 569
321 Coal, not agglomerated	3 467	3 590	4 049	18.8	36 447	43 148
333 Crude petroleum oils	1 105	896	950	4.4	8 955	11 073
343 Natural gas	798	883	993	4.6	7 789	10 324
542 Medicaments	201	305	278	1.3	3 709	3 359
682 Copper	331	352	285	1.3	2 513	3 982
684 Aluminium	392	572	338	1.6	4 129	4 703
781 Motor vehicles for transport of people	110	86	133	0.6	1 838	1 537
971 Gold, non-monetary	1 023	1 568	695	3.2	13 797	13 622
SECTION AND DIVISION OF THE SITC						
0 Food and live animals						
00 Live animals (excl. fish, crustaceans, molluscs and aquatic invertebrates)	92	127	73	0.3	1 156	1 123
01 Meat and meat preparations	588	597	616	2.9	6 350	6 939
02 Dairy products and birds' eggs	170	179	178	0.8	1 956	2 242
03 Fish (not marine mammals), crustaceans, molluscs and aquatic invertebrates, and preparations thereof	72	82	65	0.3	990	993
04 Cereals and cereal preparations	777	827	680	3.2	5 267	7 358
05 Vegetables and fruit	136	138	128	0.6	1 575	1 496
06 Sugars, sugar preparations and honey	13	30	31	0.1	293	335
07 Coffee, tea, cocoa, spices, and manufactures thereof	20	24	27	0.1	287	294
08 Feeding stuff for animals (excl. unmilled cereals)	75	88	90	0.4	1 035	1 015
09 Miscellaneous edible products and preparations	69	80	75	0.3	736	821
<i>Total Food and live animals</i>	<i>2 012</i>	<i>2 171</i>	<i>1 963</i>	<i>9.1</i>	<i>19 645</i>	<i>22 616</i>
1 Beverages and tobacco						
11 Beverages	177	176	172	0.8	2 350	2 175
12 Tobacco and tobacco manufactures	9	10	7	—	126	127
<i>Total Beverages and tobacco</i>	<i>186</i>	<i>186</i>	<i>179</i>	<i>0.8</i>	<i>2 475</i>	<i>2 302</i>
2 Crude materials, inedible, except fuels						
21 Hides, skins and furskins, raw	68	71	67	0.3	593	804
22 Oil-seeds and oleaginous fruits	209	168	73	0.3	663	971
23 Crude rubber (incl. synthetic and reclaimed)	1	1	1	—	14	15
24 Cork and wood	80	102	102	0.5	1 127	1 208
25 Pulp and waste paper	19	19	21	0.1	241	252
26 Textile fibres and their wastes (not manufactured into yarn or fabric)	350	506	655	3.0	2 816	4 055
27 Crude fertilizers (excl. those of Division 56) and crude minerals (excl. coal, petroleum and precious stones)	24	25	52	0.2	313	387
28 Metalliferous ores and metal scrap	6 860	7 180	7 313	34.0	53 048	78 496
29 Crude animal and vegetable materials, n.e.s.	19	16	17	0.1	202	206
<i>Total Crude materials, inedible, except fuels</i>	<i>7 629</i>	<i>8 088</i>	<i>8 302</i>	<i>38.6</i>	<i>59 016</i>	<i>86 394</i>
3 Mineral fuels, lubricants and related materials						
32 Coal, coke and briquettes	3 471	3 592	4 084	19.0	36 558	43 335
33 Petroleum, petroleum products and related materials	1 383	1 208	1 167	5.4	11 384	13 734
34 Gas, natural and manufactured	880	968	1 078	5.0	8 895	11 388
<i>Total Mineral fuels, lubricants and related materials</i>	<i>5 733</i>	<i>5 769</i>	<i>6 329</i>	<i>29.4</i>	<i>56 837</i>	<i>68 457</i>

— nil or rounded to zero (including null cells)

(a) Some SITC sections and divisions exclude commodities subject to a confidentiality restriction. These are included in Division 98. For more information see paragraph 26 of the Explanatory Notes.

(b) Per cent of total merchandise is calculated for the most recent month.

(c) The 'Major commodities' section lists commodities at the SITC Rev 4 3-digit level which are the most significant (by value) or are of particular interest. Abbreviated descriptors have been used. The list of 'Major commodities' is reviewed annually.

				Per cent of total merchandise exports(b)	12 MONTHS ENDED JUNE	
					2010	2011
					\$m	\$m
				%		
SECTION AND DIVISION OF THE SITC						
4	Animal and vegetable oils, fats and waxes					
41	Animal oils and fats	38	29	40	0.2	277 369
42	Fixed vegetable fats and oils, crude, refined or fractionated	17	15	11	0.1	155 166
43	Fats and oils (processed), waxes and inedible mixtures or preparations, of animal or vegetable origin, n.e.s.	1	1	1	—	12 10
	<i>Total Animal and vegetable oils, fats and waxes</i>	56	45	52	0.2	443 545
5	Chemicals and related products, n.e.s.					
51	Organic chemicals	16	17	18	0.1	165 192
52	Inorganic chemicals	43	63	32	0.2	531 574
53	Dyeing, tanning and colouring materials	66	69	67	0.3	665 733
54	Medicinal and pharmaceutical products	228	367	339	1.6	4 117 3 811
55	Essential oils and resinoids and perfume materials, toilet, polishing and cleansing preparations	49	47	54	0.3	627 639
56	Fertilisers (excl. crude)	19	19	65	0.3	335 364
57	Plastics in primary forms	27	23	26	0.1	290 343
58	Plastics in non-primary forms	25	33	28	0.1	347 350
59	Chemical materials and products, n.e.s.	82	78	77	0.4	1 000 954
	<i>Total Chemicals and related products, n.e.s.</i>	554	715	706	3.3	8 075 7 960
6	Manufactured goods classified chiefly by material					
61	Leather, leather manufactures and dressed furskins, n.e.s.	23	20	17	0.1	258 263
62	Rubber manufactures, n.e.s.	19	18	17	0.1	186 198
63	Cork and wood manufactures (excl. furniture)	12	8	11	0.1	144 138
64	Paper, paperboard and articles of paper pulp, of paper or of paperboard	68	77	76	0.4	719 826
65	Textile yarn, fabrics, made-up articles n.e.s. and related products	24	22	22	0.1	279 262
66	Non-metallic mineral manufactures, n.e.s.	44	46	52	0.2	751 659
67	Iron and steel	74	95	129	0.6	1 129 1 304
68	Non-ferrous metals	992	1 113	823	3.8	9 603 11 400
69	Manufactures of metals, n.e.s.	94	85	89	0.4	1 066 1 069
	<i>Total Manufactured goods classified chiefly by material</i>	1 351	1 483	1 236	5.7	14 135 16 118
7	Machinery and transport equipment					
71	Power generating machinery and equipment	75	79	83	0.4	787 903
72	Machinery specialized for particular industries	146	161	158	0.7	1 824 1 931
73	Metal working machinery	12	9	17	0.1	139 140
74	General industrial machinery and equipment, n.e.s. and machine parts, n.e.s.	160	156	156	0.7	1 705 1 852
75	Office machines and automatic data processing machines	102	97	92	0.4	1 059 1 180
76	Telecommunications and sound recording and reproducing apparatus and equipment	74	75	70	0.3	931 942
77	Electrical machinery, apparatus and appliances, parts (incl. non electrical counterparts of electrical domestic equip)	122	127	119	0.6	1 521 1 494
78	Road vehicles (incl. air-cushion vehicles)	199	190	232	1.1	2 834 2 688
79	Transport equipment (excl. road vehicles)	96	223	100	0.5	1 235 1 217
	<i>Total Machinery and transport equipment</i>	986	1 116	1 026	4.8	12 035 12 347

— nil or rounded to zero (including null cells)

(b) Per cent of total merchandise is calculated for the most recent month.

(a) Some SITC sections and divisions exclude commodities subject to a confidentiality restriction. These are included in Division 98. For more information see paragraph 26 of the Explanatory Notes.

					12 MONTHS ENDED JUNE	
					2010	2011
					\$m	\$m
SECTION AND DIVISION OF THE SITC						
8	Miscellaneous manufactured articles					
81	Prefabricated buildings and sanitary, plumbing, heating and lighting fixtures and fittings, n.e.s.	11	11	9	—	160 122
82	Furniture and parts thereof; bedding, mattresses, mattress supports, cushions and similar stuffed furnishings	9	7	7	—	106 93
83	Travel goods, handbags and similar containers	2	2	2	—	34 27
84	Articles of apparel and clothing accessories	22	18	16	0.1	240 242
85	Footwear	4	3	4	—	43 44
87	Professional, scientific and controlling instruments and apparatus, n.e.s.	159	169	156	0.7	1 969 1 925
88	Photographic apparatus, equipment and supplies and optical goods, n.e.s., watches and clocks	22	19	22	0.1	285 262
89	Miscellaneous manufactured articles, n.e.s.	168	170	192	0.9	2 041 2 182
	<i>Total Miscellaneous manufactured articles</i>	397	398	409	1.9	4 877 4 898
9	Commodities and transactions not classified elsewhere in the SITC					
93	Special transactions and commodities not classified according to kind	129	121	109	0.5	1 766 1 465
95	Gold coin whether or not legal tender, and other coin being legal tender	62	53	31	0.1	502 651
96	Coin (excl. gold coin) not being legal tender	—	—	—	—	— —
97	Gold, non-monetary (excl. gold ores and concentrates)	1 023	1 568	695	3.2	13 797 13 622
98	Combined confidential items excl. some of SITC 280 (exports only) and some of SITCs 510 and 520 (imports only)	551	546	476	2.2	7 115 7 220
	<i>Commodities and transactions not classified elsewhere in the SITC</i>	1 765	2 288	1 311	6.1	23 181 22 958
Total merchandise exports		20 668	22 259	21 513	100.0	200 720 244 595
Balance of Payments Adjustments		120	335	704	. .	1 089 2 118
Goods Credits (exports) on a Balance of Payments Basis		20 788	22 594	22 217	. .	201 809 246 713

.. not applicable
— nil or rounded to zero (including null cells)

(a) Some SITC sections and divisions exclude commodities subject to a confidentiality restriction. These are included in Division 98. For more information see paragraph 26 of the Explanatory Notes.

(b) Per cent of total merchandise is calculated for the most recent month.

					12 MONTHS ENDED JUNE					
					Per cent of total merchandise imports(b)	2010 2011				
					Apr 2011	May 2011	Jun 2011			
					\$m	\$m	\$m	%	\$m	\$m
MAJOR COMMODITIES (c)										
333	Crude petroleum oils	1 790	1 718	2 155	11.7	14 721	19 312			
334	Refined petroleum oils	1 295	1 226	1 140	6.2	10 700	11 260			
542	Medicaments	733	728	642	3.5	7 504	8 214			
723	Civil engineering and contractors' plant and equipment	274	301	313	1.7	2 756	3 335			
743	Air pumps, compressors or fans; hoods; centrifuges; filtering apparatus; parts	131	138	144	0.8	3 188	1 808			
752	Automatic data processing machines	565	569	624	3.4	6 112	6 403			
761	Televisions, monitors and projectors	174	220	218	1.2	3 157	2 541			
764	Telecommunications equipment	546	610	698	3.8	6 908	7 935			
781	Motor cars for the transport of persons	836	1 008	1 235	6.7	14 909	14 462			
782	Motor vehicles for the transport of goods	411	410	469	2.5	5 938	5 528			
784	Parts and accessories of the motor vehicles	202	213	210	1.1	2 414	2 543			
894	Baby carriages, toys, games and sporting goods	143	187	187	1.0	2 591	2 462			
971	Gold, non-monetary	391	510	390	2.1	7 741	5 442			
SECTION AND DIVISION OF THE SITC										
0	Food and live animals									
00	Live animals other than fish, crustaceans, molluscs and aquatic invertebrates	9	6	9	—	100	125			
01	Meat and meat preparations	55	47	48	0.3	565	551			
02	Dairy products and birds' eggs	46	53	54	0.3	592	659			
03	Fish (not marine mammals), crustaceans, molluscs and aquatic invertebrates, and preparations thereof	97	97	101	0.5	1 249	1 275			
04	Cereals and cereal preparations	55	62	63	0.3	790	782			
05	Vegetables and fruit	127	133	145	0.8	1 534	1 655			
06	Sugars, sugar preparations and honey	51	21	34	0.2	294	358			
07	Coffee, tea, cocoa, spices, and manufactures thereof	93	99	107	0.6	1 165	1 295			
08	Feeding stuff for animals (excl. unmilled cereals)	32	55	53	0.3	598	556			
09	Miscellaneous edible products and preparations	121	141	124	0.7	1 592	1 628			
	Total Food and live animals	685	715	738	4.0	8 477	8 884			
1	Beverages and tobacco									
11	Beverages	107	111	92	0.5	1 458	1 469			
12	Tobacco and tobacco manufactures	37	29	20	0.1	262	273			
	Total Beverages and tobacco	144	139	112	0.6	1 720	1 743			
2	Crude materials, inedible, except fuels									
21	Hides, skins and furskins, raw	—	—	—	—	1	2			
22	Oil-seeds and oleaginous fruits	4	4	3	—	48	48			
23	Crude rubber (incl. synthetic and reclaimed)	15	12	12	0.1	135	136			
24	Cork and wood	52	53	47	0.3	611	670			
25	Pulp and waste paper	15	15	14	0.1	181	182			
26	Textile fibres and their wastes (not manufactured into yarn or fabric)	10	11	9	—	130	114			
27	Crude fertilizers (excl. those of Division 56) and crude minerals (excl. coal, petroleum and precious stones)	29	25	31	0.2	135	243			
28	Metalliferous ores and metal scrap	39	137	84	0.5	510	864			
29	Crude animal and vegetable materials, n.e.s.	23	25	24	0.1	316	320			
	Total Crude materials, inedible, except fuels	187	280	224	1.2	2 067	2 578			
3	Mineral fuels, lubricants and related materials									
32	Coal, coke and briquettes	16	5	4	—	28	62			
33	Petroleum, petroleum products and related materials	3 139	2 997	3 352	18.2	25 855	31 186			
34	Gas, natural and manufactured	180	169	151	0.8	1 625	2 307			
	Total Mineral fuels, lubricants and related materials	3 334	3 171	3 508	19.0	27 509	33 555			

— nil or rounded to zero (including null cells)

(a) Some SITC sections and divisions exclude commodities subject to a confidentiality restriction. These are included in Division 98. For more information see paragraph 26 of the Explanatory Notes.

(b) Per cent of total merchandise is calculated for the most recent month.

(c) The 'Major commodities' section lists commodities at the SITC Rev 4 3-digit level which are the most significant (by value) or are of particular interest. Abbreviated descriptors have been used. The list of 'Major commodities' is reviewed annually.

				Per cent of total merchandise imports(b)	12 MONTHS ENDED JUNE	
					2010	2011
					\$m	\$m
				%		
SECTION AND DIVISION OF THE SITC						
4	Animal and vegetable oils, fats and waxes					
41	Animal oils and fats	3	2	3	32	36
42	Fixed vegetable fats and oils, crude, refined or fractionated	38	53	33	425	464
43	Fats and oils (processed), waxes and inedible mixtures or preparations, of animal or vegetable n.e.s.	6	5	4	65	60
	<i>Total Animal and vegetable oils, fats and waxes</i>	47	60	40	522	560
5	Chemicals and related products, n.e.s.					
51	Organic chemicals	257	231	239	3 274	3 291
52	Inorganic chemicals	89	115	100	1 086	1 187
53	Dyeing, tanning and colouring materials	47	51	57	615	645
54	Medicinal and pharmaceutical products	886	914	830	9 206	10 093
55	Essential oils and resinoids and perfume materials; toilet, polishing and cleansing preparations	144	155	151	1 801	1 885
56	Fertilisers (excl. crude)	182	97	102	1 044	1 437
57	Plastics in primary forms	120	131	124	1 363	1 461
58	Plastics in non-primary forms	116	121	110	1 368	1 425
59	Chemical materials and products, n.e.s.	170	172	186	1 932	2 192
	<i>Total Chemicals and related products, n.e.s.</i>	2 012	1 988	1 898	21 689	23 616
6	Manufactured goods classified chiefly by material					
61	Leather, leather manufactures, and dressed furskins, n.e.s.	10	13	13	139	145
62	Rubber manufactures, n.e.s.	286	287	300	2 806	3 129
63	Cork and wood manufactures (excl. furniture)	59	63	59	648	739
64	Paper, paperboard and articles of paper pulp, of paper or of paperboard	182	201	211	2 704	2 740
65	Textile yarn, fabrics, made-up articles n.e.s., and related products	197	207	192	2 379	2 469
66	Non-metallic mineral manufactures, n.e.s.	191	195	190	2 596	2 466
67	Iron and steel	306	286	344	3 258	3 763
68	Non-ferrous metals	130	262	270	2 393	2 498
69	Manufactures of metals, n.e.s.	416	481	434	4 970	5 324
	<i>Total Manufactured goods classified chiefly by material</i>	1 777	1 995	2 014	21 895	23 272
7	Machinery and transport equipment					
71	Power generating machinery and equipment	322	402	348	4 406	4 352
72	Machinery specialized for particular industries	598	626	664	6 935	7 031
73	Metal working machinery	50	62	55	629	636
74	General industrial machinery and equipment, n.e.s. and machine parts, n.e.s.	764	804	779	11 277	10 042
75	Office machines and automatic data processing machines	771	794	888	9 082	9 259
76	Telecommunications and sound recording and reproducing apparatus and equipment	780	894	995	11 231	11 440
77	Electrical machinery, apparatus, appliances, parts (incl. non-elec. counterparts of electrical domestic equip)	984	1 038	1 040	9 688	11 608
78	Road vehicles (incl. air-cushion vehicles)	1 559	1 745	2 036	24 970	24 264
79	Transport equipment (excl. road vehicles)	150	218	108	2 101	2 228
	<i>Total Machinery and transport equipment</i>	5 977	6 583	6 911	80 318	80 860

— nil or rounded to zero (including null cells)

(b) Per cent of total merchandise is calculated for the most recent month.

(a) Some SITC sections and divisions exclude commodities subject to a confidentiality restriction. These are included in Division 98. For more information see paragraph 26 of the Explanatory Notes.

					12 MONTHS ENDED JUNE	
					2010	2011
					\$m	\$m
SECTION AND DIVISION OF THE SITC						
8	Miscellaneous manufactured articles					
81	Prefabricated buildings; sanitary, plumbing, heating and lighting fixtures and fittings, n.e.s.	76	80	92	0.5	771 957
82	Furniture, parts thereof; bedding, mattresses, mattress supports, cushions and similar stuffed furnishings	199	213	215	1.2	2 560 2 674
83	Travel goods, handbags and similar containers	54	60	62	0.3	736 803
84	Articles of apparel and clothing accessories	458	411	430	2.3	4 920 5 593
85	Footwear	91	81	87	0.5	1 263 1 337
87	Professional, scientific and controlling instruments and apparatus, n.e.s.	388	411	406	2.2	4 658 4 813
88	Photographic apparatus, equipment and supplies and optical goods, n.e.s., watches and clocks	104	105	109	0.6	1 376 1 381
89	Miscellaneous manufactured articles, n.e.s.	724	819	828	4.5	10 040 10 103
	<i>Total Miscellaneous manufactured articles</i>	<i>2 093</i>	<i>2 180</i>	<i>2 228</i>	<i>12.1</i>	<i>26 323 27 660</i>
9	Commodities and transactions not classified elsewhere in the SITC					
93	Special transactions and commodities not classified according to kind	3	4	2	—	38 36
95	Gold coin whether or not legal tender, and other coin being legal tender	1	1	1	—	9 14
96	Coin (excl. gold coin) not being legal tender	—	—	—	—	2 4
97	Gold, non-monetary (excl. gold ores and concentrates)	391	510	390	2.1	7 741 5 442
98	Combined confidential items excl. some of SITC 280 (exports only) and some of SITCs 510 and 520 (imports only)	716	415	345	1.9	5 280 5 955
	<i>Total Commodities and transactions not classified elsewhere in the SITC</i>	<i>1 111</i>	<i>930</i>	<i>739</i>	<i>4.0</i>	<i>13 069 11 451</i>
Total merchandise imports		17 369	18 041	18 413	100.0	203 590 214 179
Balance of Payments Adjustments		393	126	578	. .	576 3 217
Goods Debits (imports) on a Balance of Payments Basis		17 762	18 167	18 991	. .	204 166 217 396

.. not applicable
— nil or rounded to zero (including null cells)

(a) Some SITC sections and divisions exclude commodities subject to a confidentiality restriction. These are included in Division 98. For more information see paragraph 26 of the Explanatory Notes.

(b) Per cent of total merchandise is calculated for the most recent month.

INTERNATIONAL MERCHANDISE TRADE(a), By Country and country groups

	EXPORTS				IMPORTS(b)				BALANCE OF MERCHANDISE TRADE	
	2010-11	Jun 2011	12 months ended June 2010	12 months ended June 2011	2010-11	Jun 2011	12 Months Ended June 2010	12 Months Ended June 2011	2010-11	12 Months Ended June 2011
			\$m	\$m			\$m	\$m		
Belgium	1 329	164	1 079	1 329	1 644	140	1 560	1 644	-315	-315
Brazil	1 511	126	1 294	1 511	882	96	620	882	629	629
Canada	1 296	110	1 295	1 296	1 758	153	1 726	1 758	-462	-462
China	64 595	6 114	46 518	64 595	41 118	3 408	36 374	41 118	23 478	23 478
Denmark	153	15	141	153	941	68	1 105	941	-787	-787
Egypt(c)	593	30	411	593	39	17	26	39	554	554
Fiji	302	28	306	302	187	13	163	187	115	115
Finland	227	27	285	227	862	95	664	862	-636	-636
France	1 098	44	1 121	1 098	3 799	310	3 885	3 799	-2 701	-2 701
Germany	2 103	194	1 654	2 103	10 246	838	10 718	10 246	-8 142	-8 142
Hong Kong (SAR of China)	3 261	227	2 719	3 261	1 153	87	1 129	1 153	2 108	2 108
India	15 552	1 488	16 179	15 552	2 083	155	1 845	2 083	13 469	13 469
Indonesia	4 774	527	4 329	4 774	5 755	626	4 685	5 755	-981	-981
Iran	157	6	149	157	121	2	114	121	36	36
Iraq	327	1	196	327	—	—	—	—	327	327
Ireland	123	9	121	123	2 178	181	2 305	2 178	-2 055	-2 055
Israel	228	31	176	228	609	48	573	609	-381	-381
Italy	1 240	93	948	1 240	4 847	363	4 814	4 847	-3 607	-3 607
Japan	46 753	4 254	37 069	46 753	16 681	1 523	17 779	16 681	30 072	30 072
Korea, Republic of	22 461	2 010	16 494	22 461	6 985	583	7 049	6 985	15 476	15 476
Kuwait	623	91	525	623	317	—	417	317	306	306
Malaysia	4 076	414	3 133	4 076	8 813	657	8 504	8 813	-4 737	-4 737
Mexico	887	58	741	887	1 592	128	1 235	1 592	-705	-705
Netherlands	2 974	253	2 058	2 974	1 380	113	1 360	1 380	1 594	1 594
New Zealand	7 687	629	8 027	7 687	7 381	706	7 004	7 381	306	306
Pakistan	383	64	610	383	175	14	153	175	208	208
Papua New Guinea	2 229	196	1 972	2 229	3 474	317	2 930	3 474	-1 245	-1 245
Philippines	1 485	89	1 092	1 485	442	33	461	442	1 043	1 043
Saudi Arabia	1 500	158	1 533	1 500	369	26	462	369	1 131	1 131
Singapore	5 444	330	5 046	5 444	11 408	984	10 899	11 408	-5 963	-5 963
South Africa	1 612	124	1 762	1 612	1 006	64	1 004	1 006	606	606
Spain	861	88	493	861	1 702	139	1 679	1 702	-841	-841
Sweden	459	46	441	459	2 314	183	2 084	2 314	-1 855	-1 855
Switzerland	410	68	269	410	2 506	225	2 231	2 506	-2 096	-2 096
Taiwan	9 087	674	6 851	9 087	3 616	266	3 416	3 616	5 471	5 471
Thailand	6 975	571	4 704	6 975	9 117	638	12 444	9 117	-2 143	-2 143
Turkey	424	33	304	424	485	37	459	485	-61	-61
United Arab Emirates	2 195	183	1 974	2 195	3 131	621	2 293	3 131	-936	-936
United Kingdom	6 537	270	7 211	6 537	5 986	571	5 759	5 986	551	551
United States of America	9 076	709	9 546	9 076	23 250	2 007	21 856	23 250	-14 174	-14 174
Viet Nam	1 805	158	1 408	1 805	2 667	262	3 110	2 667	-863	-863
Other Countries(b)	9 775	810	8 534	9 775	21 154	1 715	16 688	21 154	-11 379	-11 379
Total	244 595	21 513	200 720	244 595	214 179	18 413	203 590	214 179	30 416	30 416
APEC	193 340	17 206	151 968	193 340	148 553	12 704	144 014	148 553	44 787	44 787
ASEAN	24 725	2 099	19 859	24 725	39 383	3 326	41 092	39 383	-14 659	-14 659
Developing Countries	154 733	13 924	121 921	154 733	110 228	9 580	102 860	110 228	44 505	44 505
Least Developed Countries	2 275	144	1 841	2 275	378	37	291	378	1 897	1 897
European Union(d)	17 564	1 231	15 920	17 564	38 512	3 214	38 489	38 512	-20 947	-20 947
OECD	107 096	9 183	90 087	107 096	101 744	8 734	100 591	101 744	5 352	5 352

— nil or rounded to zero (including null cells)

(a) See Time series spreadsheets for details of all countries.

(b) From September 2008 imports data with confidentiality restrictions 'no commodity details' or 'no value details' are included in Other countries.

(c) Exports of Alumina to Egypt are excluded from country total and included in the 'Other Countries' category.

(d) The European Union includes 27 member countries for all periods.

	12 MONTHS ENDED JUNE			
	2010-11	Jun 2011	2010	2011
	\$m	\$m	\$m	\$m
EXPORTS (a)				
New South Wales	36 376	3 545	31 205	36 376
Victoria	19 641	1 723	18 427	19 641
Queensland	48 661	4 542	43 266	48 661
South Australia	11 192	1 066	8 134	11 192
Western Australia	111 736	9 336	83 306	111 736
Tasmania	3 172	279	3 004	3 172
Northern Territory	5 302	395	4 977	5 302
Australian Capital Territory	3	—	4	3
State not available for publication(b)	441	33	557	441
Re-exports	8 071	594	7 841	8 071
Total	244 595	21 513	200 720	244 595
IMPORTS				
New South Wales	81 467	6 941	76 003	81 467
Victoria	56 819	5 009	53 118	56 819
Queensland	33 113	3 017	31 035	33 113
South Australia	6 534	587	6 446	6 534
Western Australia	25 958	2 166	27 937	25 958
Tasmania	637	49	715	637
Northern Territory	3 688	296	3 051	3 688
Australian Capital Territory	7	2	5	7
State not available for publication(c)	5 955	345	5 280	5 955
Total	214 179	18 413	203 590	214 179

— nil or rounded to zero (including null cells)

(a) State in which the final stage of production or manufacture occurs.

(b) Exports of Alumina to Bahrain, Egypt and Iceland are excluded from the state totals and included in 'State not available for publication'.

(c) From September 2008 imports data with confidentiality restrictions 'no commodity details' or 'no value details' are included in State not available for publication.

PERIOD AVERAGE EXCHANGE RATES(a), Per Australian dollar

<i>Period</i>	<i>United States dollar</i>	<i>UK pound sterling</i>	<i>Euro</i>	<i>Japanese yen</i>	<i>Special Drawing Right</i>	<i>Trade-weighted index of value of the A\$(b)</i>
FINANCIAL YEAR						
2008–09	0.7456	0.4621	0.5414	73.99	0.4869	60.2
2009–10	0.8830	0.5590	0.6362	80.77	0.5710	68.9
2010–11	0.9891	0.6213	0.7248	82.10	0.6346	74.0
MONTHS						
2010						
April	0.9265	0.6043	0.6902	86.45	0.6105	72.1
May	0.8717	0.5942	0.6928	80.38	0.5883	68.9
June	0.8529	0.5777	0.6976	77.48	0.5808	67.7
July	0.8743	0.5725	0.6852	76.63	0.5821	68.2
August	0.9000	0.5747	0.6976	76.87	0.5928	69.5
September	0.9358	0.6010	0.7169	78.99	0.6138	71.5
October	0.9812	0.6190	0.7060	80.26	0.6251	73.2
November	0.9902	0.6198	0.7239	81.61	0.6338	74.0
December	0.9909	0.6347	0.7497	82.58	0.6454	74.7
2011						
January	0.9941	0.6305	0.7457	82.16	0.6434	74.3
February	1.0086	0.6252	0.7383	83.29	0.6457	75.1
March	1.0100	0.6250	0.7217	82.60	0.6394	74.8
April	1.0554	0.6458	0.7311	88.09	0.6616	77.4
May	1.0688	0.6537	0.7448	86.75	0.6687	77.9
June	1.0603	0.6535	0.7368	85.35	0.6631	77.0

(a) These exchange rates and the trade-weighted index are derived using rates provided by the Reserve Bank of Australia in respect of each trading day.

(b) May 1970 = 100. The Trade-weighted index is reweighted annually on 1 October and on special occasions as required.

	2007-08	2008-09	2009-10	Dec 2010	Jan 2011	Feb 2011	Mar 2011	Apr 2011	May 2011
	\$m	\$m	\$m	\$m	\$m	\$m	\$m	\$m	\$m
BALANCE									
On goods and services	—	—	—	8	-36	-15	15	90	339
CREDITS									
Total goods and services	—	—	—	9	-32	-8	26	101	137
Total goods	—	—	—	8	-4	29	21	60	19
Rural goods	—	—	—	2	-2	—	—	5	-55
Non-rural goods	—	—	—	6	-2	29	21	55	75
Net exports of goods under merchanting	—	—	—	—	—	—	—	—	—
Non-monetary gold	—	—	—	—	—	—	—	—	-1
Total services	—	—	—	1	-28	-37	5	41	118
DEBITS									
Total goods and services	—	—	—	-1	-4	-7	-11	-11	202
Total goods	—	—	—	3	—	-1	-9	-6	140
Consumption goods	—	—	—	—	—	—	1	—	-1
Capital goods	—	—	—	3	—	—	1	—	91
Intermediate and other merchandise goods	—	—	—	—	—	-1	-11	-6	50
Non-monetary gold	—	—	—	—	—	—	—	—	—
Total services	—	—	—	-4	-4	-6	-2	-5	62

— nil or rounded to zero (including null cells)

(a) This table is presented consistent with BPM6 sign conventions. This means for the balance on goods and services a negative revision indicates a decrease in a surplus or an increase in a deficit. For debits a negative revision indicates an increase in debits while a positive revision indicates a decrease in debits.

EXPLANATORY NOTES

INTRODUCTION

1 This publication presents preliminary estimates of Australia's international trade in goods and services on a balance of payments basis (tables 1–11 and 17) and merchandise import and export statistics on a recorded trade basis (tables 12–15). In addition, table 16 Exchange rates and trade-weighted indexes are derived by using exchange rates and indexes provided by the Reserve Bank of Australia.

2 Merchandise trade statistics on a recorded trade basis are compiled from information submitted by exporters and importers or their agents to the Australian Customs and Border Protection Service (Customs and Border Protection). Adjustments for coverage, timing and valuation are made to recorded trade data to convert them to a balance of payments basis. The services data are sourced from the quarterly Survey of International Trade in Services and a range of administrative data and indicator series.

3 More comprehensive quarterly estimates of Australia's trade in goods and services, together with comprehensive details of Australia's balance of payments are included in the quarterly publication, *Balance of Payments and International Investment Position, Australia* (cat. no. 5302.0). Detailed monthly statistics on merchandise trade are available in Time Series Spreadsheets on the ABS website or by subscription to tailored services. More information on the *International Trade in Services by Country, by State and by Detailed Services Category* are available on a financial year basis (cat. no. 5368.0.55.003) following the September issue of this publication and calendar year basis (cat. no. 5368.0.55.004) following the March issue of this publication.

CONCEPTS, SOURCES AND METHODS

4 The conceptual framework used in compiling Australia's merchandise trade statistics can be found in *International Merchandise Trade, Australia: Concepts, Sources and Methods, 2001* (cat. no. 5489.0).

5 The conceptual framework used in compiling Australia's balance of payments statistics is based on the International Monetary Fund's *Balance of Payments and International Investment Position Manual, Sixth Edition (BPM6)*. Descriptions of the underlying concepts and structure of the balance of payments and the sources, methods and terms used in compiling estimates are presented in the publication *Balance of Payments and International Investment Position, Australia: Concepts, Sources and Methods, 1998* (cat. no. 5331.0). This version reflects the international standards prior to BPM6 and is currently being revised. The first part of the revised document was released on 8 March 2011, featuring only the Goods Account. Other components will be released as they become available. Further information on the key changes introduced with BPM6 can be found in the *Information paper: Implementation of new international statistical standards in the ABS National and International Accounts, September 2009* (cat. no. 5310.0.55.002).

6 To bring merchandise trade statistics on a recorded trade basis to a balance of payments basis, timing adjustments are made to ensure that the transaction is recorded in the period in which ownership changed, rather than in the period in which the transaction was recorded by Customs and Border Protection or the period in which the goods arrived in/departed from an Australian port. Adjustments are also made to account for the change of ownership of goods not included in merchandise trade statistics. Chapter 6 of cat. no. 5331.0 provides more detail on the relationship between statistics on international merchandise trade on a recorded trade basis and on a balance of payments basis.

7 Recorded trade exports data presented for recent months in tables 12–15 of this publication are based on information initially reported by exporters to Customs and Border Protection. At the time of initial reporting to Customs and Border Protection the final prices may not be known for some commodities. Therefore, the information recorded for recent months for commodities like iron ore and coal can include a variety of prices including previous or current contract prices and the prevailing spot prices.

EXPLANATORY NOTES *continued*

CONCEPTS, SOURCES AND METHODS *continued*

Newly negotiated contract prices may not be fully reflected in the data first reported to Customs and Border Protection, and to compensate for this, the balance of payments series may reflect adjusted price levels.

8 The Concepts, Sources and Methods publications and information papers are available to download for free from the ABS website. Select *Statistics*, then select *By Catalogue Number*, and then the catalogue numbers as above.

CLASSIFICATIONS

9 The merchandise trade data on a recorded trade basis are presented using the following commodity classifications:

- the Harmonized System 2007 (available on request)
- the Standard International Trade Classification (SITC Revision 4)
- the Classification by Broad Economic Categories (BEC)
- the industry classification: Australian and New Zealand Standard Industrial Classification, 2006 (ANZSIC 06) from July 2005.

10 The Balance of Payments 'goods and services' series are presented according to three classifications with the goods classifications derived from SITC Revision 4 and BEC. The classifications are:

- for goods:
 - the Balance of Payments Commodities for Exports (BoPCE)
 - the Balance of Payments Broad Economic Categories (BoPBEC) for Imports
- for services:
 - the Extended Balance of Payments Services Classification (EBOPS).

ACCURACY, RELIABILITY AND REVISIONS

11 While every effort is made to ensure the accuracy and reliability of estimates, most series are subject to revision as more complete and accurate information becomes available. Care should be exercised in the use and interpretation of estimates in this publication. The transactions occurring in international trade in goods and services are of many different kinds, and therefore the compilation of trade estimates entails the use of a very wide range of statistical data of varying degrees of accuracy and timeliness. For further information on the monthly services series, see paragraph 25.

12 The revisions are applied differently for merchandise trade and balance of payments series. Each month, merchandise trade data are revised for the previous six months to incorporate latest available data.

13 For the balance of payments 'goods and services' series, in original terms, no revisions are applied in the July, October, January or April issues. This is to ensure the monthly series align with the comparable series in the quarterly publication. In the September issue revisions can be applied to the four previous financial years. In other issues revisions can be applied to the previous and current financial years to incorporate the latest available survey and administrative data.

14 In seasonally adjusted and trend terms, revisions may occur at any time point but tend to focus on the most recent estimates. Please also refer to paragraphs 17 (seasonal adjustment) and 19 (trend estimates) below.

SIGN CONVENTION

15 In keeping with BPM6 conventions, balance of payments basis credit entries are shown with an implied positive sign and debit items are shown as negative entries. For statistics on a recorded trade basis, both imports and exports are shown without sign. The calculation of percentage changes on balance of payments debit items are made without regard to sign. References to balance of payments debit items in Key Figures, Key Points, and Analysis and Comments are also made without regard to sign.

EXPLANATORY NOTES *continued*

SEASONALLY ADJUSTED AND TREND ESTIMATES

16 The estimates of international trade in goods and services on a balance of payments basis are seasonally adjusted, however the merchandise exports and imports statistics on a recorded trade basis are not. Monthly original estimates are volatile, being subject to calendar-related and large irregular influences. Seasonally adjusted estimates are derived by estimating and removing from the original series systematic calendar related effects, such as seasonal (e.g. Christmas), trading day and moving holiday (e.g. Easter) influences. Seasonal adjustment does not aim to remove the irregular or non-seasonal influences which may be present in any particular month. These irregular influences may reflect both random economic events and difficulties of statistical recording.

17 The seasonally adjusted statistics in this publication use the concurrent seasonal adjustment technique and Autoregressive Integrated Moving Average (ARIMA) modelling to estimate factors for the current and previous months. Under concurrent seasonal adjustment, the estimates of seasonal factors are fine tuned as new or revised original estimates become available each period. The seasonally adjusted estimates are subject to revisions at each reference month as the estimates of seasonal factors are improved.

18 ARIMA modelling relies on the characteristics of the series being analysed to project future period data. ARIMA modelling is used on a case-by-case basis where it results in reduced revisions to seasonally adjusted series when subsequent data become available. The projected values are temporary, intermediate values, that are only used internally to improve the estimation of the seasonal factors. The projected data do not affect the original estimates and are discarded at the end of the seasonal adjustment process. The ARIMA model is assessed as part of the annual review and, following the 2010 annual review, 40 of the 46 directly seasonally adjusted trade in goods and services time series use an ARIMA model.

19 The month-to-month movements of the seasonally adjusted estimates may not be reliable indicators of underlying behaviour because they include irregular or non-seasonal movements. Trend estimates reduce the effect of these movements as they are derived by applying a 13-term Henderson moving average to the seasonally adjusted series. The 13-term Henderson moving average (like all Henderson averages) is symmetric, but as the end of a time series is approached, asymmetric forms of the average are applied. While the asymmetric weights enable trend estimates for recent months to be produced, it does result in revisions to the estimates for the most recent six months as additional observations become available. Revisions to trend estimates can also occur because of revisions to the original data and as a result of the re-estimation of the seasonal factors. Trend estimates should be used with caution, especially around the time of unusual influences, until these have been appropriately taken into account.

20 Information papers and articles on time series methods are available on the ABS website:

- for seasonal adjustment methods, see *Information Paper: An Introductory Course on Time Series Analysis, Jan 2005* (cat. no. 1346.0.55.001) and *Time Series Analysis Frequently Asked Questions, 2003* (cat. no. 1346.0.55.002)
- for ARIMA modelling, see *Feature article: Use of ARIMA modelling to reduce revisions* in the October 2004 issue of *Australian Economic Indicators* (cat. no. 1350.0)
- for trend estimates methods, see *Information Paper: A Guide to Interpreting Time Series – Monitoring Trends* (cat. no. 1349.0)
- alternatively contact the Assistant Director, Time Series Analysis on (02) 6252 6345 or e-mail: time.series.analysis@abs.gov.au.

EXPLANATORY NOTES *continued*

ECONOMIC TERRITORY

21 In accordance with BPM6 definitions, Australia's economic territory, on a balance of payments basis, is the area under the effective control of the Australian government. It includes the land area, airspace, territorial waters, including jurisdiction over fishing rights and rights to fuels and minerals. Australian economic territory also includes territorial enclaves in the rest of the world. These are clearly demarcated areas of land, located in other countries and which are owned or rented by the Australian government for diplomatic, military, scientific or other purposes. Specifically, the economic territory of Australia consists of:

- Geographic Australia which includes Cocos (Keeling) Islands and Christmas Island;
- Norfolk Island;
- Australian Antarctic Territory;
- Heard Island and McDonald Islands;
- Territory of Ashmore Reef and Cartier Island;
- Coral Sea Islands;
- Australia's territorial enclaves overseas; and
- the Joint Petroleum Development Area (joint territory between Australia and East Timor (Timor-Leste)).

22 Because of administrative complexities and measurement difficulties, Norfolk Island transactions with the rest of the world will not always be captured in all relevant balance of payments statistics. Most of the transactions involving Norfolk Island are not material to Australia's trade performance and not capturing these transactions will not distort these statistics. However, any significant transactions will be identified and included in the relevant statistics.

COMMODITY BREAKDOWN OF GOODS

23 For details of the classifications used to present goods exports (credits) and imports (debits) on a balance of payments basis, see tables 6.6 and 6.7, respectively, in *Balance of Payments and International Investment Position, Australia: Concepts, Sources and Methods* (cat. no. 5331.0).

24 The recorded trade statistics shown in tables 12 and 13 are classified by the Standard International Trade Classification (SITC). Imports and exports of goods at a more detailed level are available from the time series spreadsheets on the ABS website. All data from July 2005 are presented according to SITC Rev 4 and data prior to July 2005 are presented according to SITC Rev 3. For details refer to the 'Classifications and Standards Update' in the July 2008 issue of this publication.

MONTHLY SERVICES SERIES

25 Monthly indicators for many of the services components that are only surveyed quarterly are not available. Monthly estimates for the freight and other transportation components of services credits in table 9 are derived by dividing the quarterly estimate by three. Freight debits are derived directly from imports data for the reference month as a difference between total merchandise cost, insurance and freight (CIF) and free on board (FOB), adjusted to reflect timing and processing adjustments. For freight credits and other transportation credits and debits, estimates are derived by extrapolating the last quarter's data by an average of movements for the same quarter over the three previous years, and then dividing the estimate by three. Similarly other services estimates are derived by extrapolating the last quarter's data by an average of movements for the same quarter over the previous three years, and then dividing the estimate by three.

CONFIDENTIALITY OF MERCHANDISE TRADE STATISTICS

26 The release of statistics for certain merchandise trade commodities is restricted in order to prevent the identification of the activities of an individual business, where this is requested by the business concerned. These restrictions do not affect the total value of exports and imports, but they can affect statistics at the country, state and commodity levels. Imports data that have the confidentiality restrictions 'No commodity details' or 'No value details' are aggregated into a single confidential commodity code. For data prior to September 2008, these data are added back into the appropriate state total and

EXPLANATORY NOTES *continued*

CONFIDENTIALITY OF MERCHANDISE TRADE STATISTICS *continued*

country total (i.e. these totals show the correct level of trade). From September 2008 these confidential data are not added back. Instead the confidential data are published as 'No country details' in the country totals and 'State not available for publication' in the state totals. Therefore, country and state totals from September 2008 may not represent the actual amount of trade in each country/state but only the trade in commodities without a 'No commodity details' or 'No value details' restriction. For information on the confidentiality restrictions applied to the merchandise trade statistics in this publication, refer to the current issue of *International Merchandise Trade: Confidential Commodities List (CCL)* (cat. no. 5372.0.55.001).

TOURISM RELATED SERVICES

27 The tourism related services memorandum items provide timely indicators of the movements in tourism related activities, not an absolute measure of the level of these activities. The tourism related indicator has been derived by combining total travel services (business, education-related and other personal travel) and passenger transportation services (which includes agency fees and commissions for air transport).

SERVICES BY STATE AND BY PARTNER COUNTRY

28 Annual services data by state, by country and detailed services are released twice yearly. Calendar year data are usually released following the March issue of this publication and financial year data are usually released following the September issue. Refer to time series data for details.

29 Services credits are classified by the state of provision, while services debits are classified by the state of consumption. The state allocations for transportation, travel, postal and courier, and telecommunication services are based on a number of indicators including merchandise trade statistics by state, overseas passenger arrivals and departures by state of clearance and data provided by the Department of Immigration and Citizenship. The allocation for other services (about 25% of all trade in services) is primarily based on the location of the business reporting the information, which serves as a proxy for the state of provision/consumption of that service. The data should be used with care but are considered suitable for analysis over time.

30 A comprehensive explanation of the data sources used and the methodology applied in the compilation of partner country statistics is provided in Chapter 17 of *Balance of Payments and International Investment Position, Australia: Concepts, Sources and Methods* (cat. no. 5331.0). Approximately 4% of total services credits and 5% of total services debits for both 2008–09 and 2009–10 were either confidential, or unable to be allocated to individual countries.

ABS DATA AVAILABLE

31 More detailed balance of payments and recorded merchandise trade data, including forward seasonal factors are available as time series spreadsheets or data cubes from the ABS website. Merchandise trade data by commodity, country and state that are not on the ABS website may be available on request. Inquiries should be made to the National Information and Referral Service as shown on the back of this publication.

RELATED PRODUCTS AND PUBLICATIONS

32 Users may also wish to refer to the following publications which can be downloaded free of charge from the ABS website by using the 'Statistics' tab and selecting the relevant catalogue number:

- *Balance of Payments and International Investment Position, Australia* (cat. no. 5302.0) – issued quarterly
- *International Merchandise Imports, Australia* (cat. no. 5439.0) – issued monthly
- *International Trade Price Indexes, Australia* (cat. no. 6457.0) – issued quarterly
- *Balance of Payments and International Investment Position, Australia: Concepts, Sources and Methods* (cat. no. 5331.0)
- *Information Paper: Quality of Australian Balance of Payments Statistics* (cat. no. 5342.0)

EXPLANATORY NOTES *continued*

RELATED PRODUCTS AND PUBLICATIONS *continued*

- *International Merchandise Trade, Australia: Concepts, Sources and Methods* (cat. no. 5489.0)
- *A Guide to Australian Balance of Payments and International Investment Position Statistics* (cat. no. 5362.0.55.001).

33 Current publications and other products released by the ABS are available from the 'Statistics' tab on the ABS website. The ABS also issues a daily *Release Advice* on the website which details products to be released in the week ahead. A *foreign trade theme page* and a *balance of payments theme page* are available on the ABS website. Select *Topics @ a Glance – Economy – Foreign Trade* or *Balance of Payments*. This page provides direct links to all foreign trade and balance of payments related data and publications, recent changes and forthcoming events, links to relevant websites and a range of other information about the Australian International Accounts.

ROUNDING

34 Where figures have been rounded, discrepancies may occur between sums of the component items and totals. Percentage movements are calculated from data at the level of precision presented in this publication (i.e. \$m) except for international merchandise trade tables.

ABBREVIATIONS

\$b	billion (thousand million) dollars
\$m	million dollars
ABS	Australian Bureau of Statistics
ANZSIC	Australian and New Zealand Standard Industrial Classification
APEC	Asia Pacific Economic Co-operation
ASEAN	Association of South-East Asian Nations
BEC	Classification by Broad Economic Categories
BoPBEC	Balance of Payments Broad Economic Categories
EMS	Environmental Management Survey
f.o.b.	free on board
n.e.s.	not elsewhere specified
n.i.e.	not included elsewhere
OECD	Organisation for Economic Co-operation and Development
SAR	Special Administrative Region
SITC	Standard International Trade Classification

APPENDIX RELATED ARTICLES

Article	Source (a)	Issue / Release
Investment		
Foreign currency exposure	5308.0	Mar qtr 2009
Foreign ownership of equity	5302.0	Sep qtr 2007
Kangaroo bonds	1301.0	2006
Gross external debt	5302.0	Sep qtr 2003
Balance of payments		
International comparison of balance of payments statistics	(b) 5363.0	1998–99
Merchandise trade		
Characteristics of Australian Exporters, 2009–10	5368.0.55.006	Mar 2011
Export and Import Invoice Currencies, Dec 2009	5368.0	Dec 2009
100 years of international trade statistics	5368.0	Oct 2007
New methodology for deriving counts of Australian exports	5368.0	Feb 2006
Australia's Importers, 2003–04	5368.0	Nov 2004
Australia's Exporters, 2003–04	5368.0	Oct 2004
Foreign ownership of Australian exporters and importers, 2002–03	5496.0.55.001	Jun 2004
Australia's trade with the USA	5368.0	Mar 2004
Major commodities traded by Australia, 1991 to 2000	(b) 5422.0	Dec qtr 2000
Trade in services		
Australian outward finance and insurance foreign affiliate trade, 2009–10	5485.0	Jun 2011
International trade in services by partner country, 2006, preliminary	5368.0	Dec 2006
Changes to International trade in services statistics, August 2006	5368.0	Aug 2006
Changes to International trade in services travel statistics	5368.0	Aug 2005
Finance		
Impact of the farm season on Australian production in 2002–03 and 2003–04	1301.0	2005
Recent trends in construction and first home buyers finance	5609.0	Mar 2002
Household sector data in the financial accounts	5232.0	Mar qtr 2002
Technical information		
Proposed changes to statistical codes in the HTISC, 2012	5368.0.55.016	May 2011
Proposed changes to statistical codes in the AHECC, 2012	5368.0.55.015	Mar 2011
Implementation of new international statistical standards in ABS National and International Accounts, September 2009	5310.0.55.002	Oct 2009
Impact of revised international standards on monthly International Trade in Goods and Services, August 2009	5368.0.55.014	Oct 2009
Estimation of Workers' Remittances based on Balance of Payments and International Investment Position Manual, Sixth Edition, September 2009	5302.0.55.003	Aug 2009
Revisions to international standards in quarterly Balance of Payments and International Investment Position statistics from September 2009, 2009	5302.0.55.002	Jul 2009
Changes to International Trade in Goods Statistics – Countries and Ports, July 2009	5368.0.55.013	Jul 2009
Revisions to international standards in monthly international trade in goods and services statistics from August 2009, 2009	5368.0.55.012	Jun 2009
Changes to International Trade in Goods Industry Statistics, July 2009	5368.0.55.011	Dec 2008
Technical note 1 – Income on debt	5302.0	Jun qtr 2008
Technical note 2 – Use of CDI data	5302.0	Jun qtr 2008
Impact of introducing Revision 4 of the Standard International Trade Classification, 2008	5368.0.55.010	May 2008
Changes to international trade statistics July 2008, 2007 to 2008	5368.0.55.009	Jan 2008
Introduction of revised international standards in ABS economic statistics in 2009, 2007	5310.0.55.001	Sep 2007
Changes on 1 January 2007 to Statistical Codes in the AHECC and the Customs Tariff, 2007	1233.0.55.001	Nov 2006
ABS implementation in January 2007 of revisions to international trade classifications, 2007	5368.0.55.005	Jun 2006
Revised treatment of Goods for Processing in Merchandise Trade and Balance of Payments Statistics	5368.0	May 2006
Impact of Customs and ABS changes on import statistics from October 2005	5439.0	Oct 2005
ABS management of the impact of the implementation of the imports component of the New Customs System	5439.0	Aug 2005
Changes to country and port classifications	5368.0	May 2003
Implementation of New Customs Systems	5368.0	Aug 2004
The effect of customs changes on export statistics	5422.0	Jun qtr 2002
Data confidentiality	5422.0	Dec qtr 1999

- (a) In the ABS website home page, select Statistics; By Catalogue Number; and click on the specified catalogue number and issue. Note: in some instances, a particular issue of the publication can be found in the Past & Future Releases page of the catalogue.
- (b) This article can be found in pdf format by referring to the Downloads page of the specified issue of this publication on the ABS website.

FOR MORE INFORMATION . . .

INTERNET

www.abs.gov.au the ABS website is the best place for data from our publications and information about the ABS.

INFORMATION AND REFERRAL SERVICE

Our consultants can help you access the full range of information published by the ABS that is available free of charge from our website. Information tailored to your needs can also be requested as a 'user pays' service. Specialists are on hand to help you with analytical or methodological advice.

PHONE

1300 135 070

EMAIL

client.services@abs.gov.au

FAX

1300 135 211

POST

Client Services, ABS, GPO Box 796, Sydney NSW 2001

FREE ACCESS TO STATISTICS

All statistics on the ABS website can be downloaded free of charge.

WEB ADDRESS

www.abs.gov.au